



BISSELL®

Experts In Home Cleaning™

CLEANview® REACH

USER'S GUIDE

14U6, 37Y8 SERIES 220-240V

- 2 Thank You
- 3 Safety Instructions
- 4 Product View
- 5 Assembly
- 6-10 Operations
- 11 Maintenance and Care
- 12 Troubleshooting
- 13 Replacement Parts
- 14 Accessories
- 15 Warranty
- 16 Consumer Services



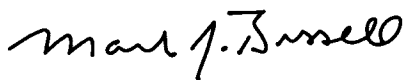
Thanks for buying a BISSELL CleanView® Reach

We're glad you purchased a BISSELL CleanView® Reach. Everything we know about floor care went into the design and construction of this complete, high-tech home cleaning system.

Your BISSELL CleanView® Reach is well made, and we back it with a limited two year warranty. We also stand behind it with a knowledgeable, dedicated Consumer Services department, so, should you ever have a problem, you'll receive fast, considerate assistance.

My great-grandfather invented the floor sweeper in 1876. Today, BISSELL is a global leader in the design, manufacture, and service of high quality homecare products like your BISSELL CleanView® Reach.

Thanks again, from all of us at BISSELL.



Mark J. Bissell
Chairman, President & CEO

IMPORTANT SAFETY INSTRUCTIONS

When using an electrical appliance, basic precautions should be observed, including the following:

READ ALL INSTRUCTIONS BEFORE USING YOUR DEEP CLEANER.

Always connect to a properly Earthed outlet. Unplug from outlet when not in use and before conducting maintenance or troubleshooting.

WARNING: To reduce the risk of fire, electric shock, or injury:

- Use indoors only
- Do not immerse; use only on surfaces moistened by cleaning process
- Do not leave machine when it is plugged in
- Do not service machine when it is plugged in
- If the supply cord is damaged, it must be replaced by the manufacturer or its service agent in order to avoid a hazard
- Do not use machine if it has been dropped, damaged, left outdoors or dropped into water
- Do not pull or carry by cord, use cord as a handle, close door on cord, pull cord around sharp corners or edges, run appliance over cord, or expose cord to heated surfaces
- Do not carry the appliance while in use
- Do not unplug by pulling on cord; unplug by grasping plug not the cord
- Do not handle plug or appliance with wet hands
- Do not put any object into appliance openings, use with blocked opening or restrict air flow
- Do not expose hair, loose clothing, fingers or body parts to openings or moving parts
- Do not pick up hot or burning objects
- Do not pick up flammable or combustible materials (lighter fluid, petrol, kerosene, etc.) or use in the presence of explosive liquids or vapours
- Do not use appliance in an enclosed space filled with vapours given off by oil base paint, paint thinner, some moth proofing substances, flammable dust, or other explosive or toxic vapours
- Remove plug from electrical outlet before cleaning or maintaining the appliance

- Not intended for use by persons (including children) with reduced physical, sensory or mental capabilities, or lack of experience and knowledge, unless they have been given supervision or instruction concerning use of the appliance by a person responsible for their safety
- Young children should be supervised to ensure that they do not play with the appliance
- Do not pick up toxic material (chlorine bleach, ammonia, drain cleaner, petrol, etc.)
- Do not modify the Earthed plug
- Do not use for any purpose other than described in this User's Guide
- Use only manufacturer's recommended attachments
- Use only cleaning products formulated by BISSELL for use in this appliance to prevent internal component damage
- Keep openings free of dust, lint, hair, etc.
- Keep appliance on a level surface
- Turn off all controls before unplugging
- Be extra careful when cleaning stairs
- Pay close attention when working around children

SAVE THESE INSTRUCTIONS FOR FUTURE USE

This model is for household use only.

WARNING:

This appliance must be Earthed.

IMPORTANT

FOR OPERATION ON A 220-240 VOLT A.C. 50/60 Hz POWER SUPPLY ONLY.

If your appliance is fitted with a nonrewireable BS 1363 plug it must not be used unless a 13 amp (ASTA approved to BS 1362) fuse is fitted in the carrier contained in the plug. (Spares may be obtained from your BISSELL supplier). If for any reason the plug is cut off, it must be disposed of, as it is an electric shock hazard should it be inserted into a 13 amp socket.

Product view



WARNING:

To reduce the risk of fire and electric shock due to internal component damage, use only BISSELL cleaning formulas intended for use with the deep cleaner.

Cleaning formula:

Keep plenty of genuine BISSELL 2X cleaning formula on hand so you can clean and protect whenever it fits your schedule. Always use genuine BISSELL deep cleaning formulas. Non-BISSELL cleaning formulas may harm the machine and will void the warranty.



1.5 L
2X Wash
& Protect
Professional
Formula w/
Scotchgard™
Protector
#81L5-E



1.5 L
2X Wash &
Protect Pet
Stain & Odour
Formula w/
Scotchgard™
Protector
#66W9-E



1.5 L
2X Wash &
Protect Fresh
Fragrance
Formula w/
Scotchgard™
Protector
#92F4-E



1.5 L
2X Wash
& Protect
Spring Breeze
Fragrance
Formula w/
Scotchgard™
Protector
#12W4-E



1.5 L
2X Wash
& Protect
Lavender
Fragrance
Formula w/
Scotchgard™
Protector
#33D2-E



473 mL
2X Hard
Floor
Solutions
#56L9-E



651 mL
Tough
Stain
Precleaner
#0400-E

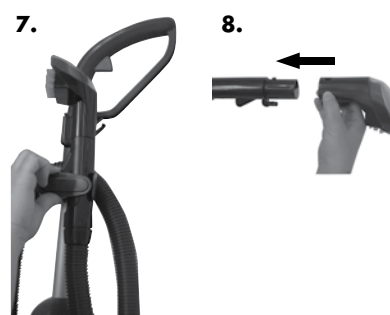
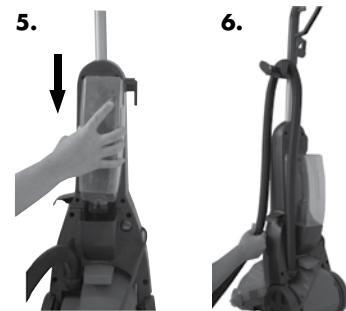
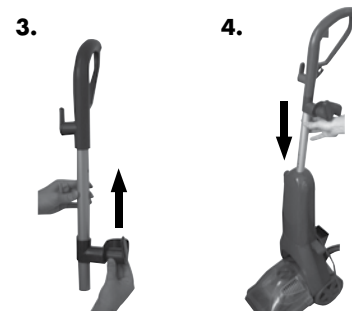
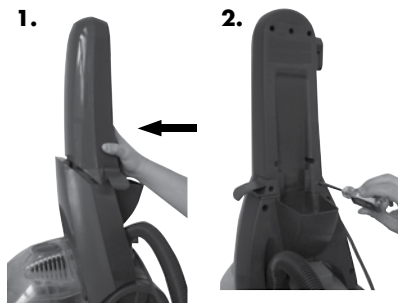
Note: Additional BISSELL formula options may be available at your local retailer.

Assembly

Your CleanView® Reach assembles quickly and easily. The only tool you will need for assembly is a Phillips head screwdriver.

1. Slide upper body onto lower body.
2. Secure with screws.
3. Attach hose wrap to upper handle by sliding it up the bottom of the handle until it snaps firmly in place.
4. Slide upper handle into upper body, until it will not go any further and secure with screw.
5. Place solution tank on back of unit.
6. Wrap power cord and flex hose.
7. Keep flex hose snugly in place by using the hose secure latch.
8. Attach tool to end of hose.

Assembly is now complete.



Operations

Special features

Your BISSELL CleanView® Reach is a home cleaning system that uses a combination of hand hot tap water, BISSELL cleaning formula, brush agitation and suction to safely clean carpets.

DirtLifter™ Powerbrush

The DirtLifter PowerBrush is designed to enhance cleaning performance. The bristle pattern safely lifts out the deep down dirt while gently grooming carpet fibers. The floating suspension self-adjusts to all carpet heights. When the power is ON and the machine is in the upright position, your carpet is protected because the brush is automatically stopped.

ReadyTools™ Dial

The Ready Tools feature allows you to choose between FLOOR CLEANING or cleaning with TOOLS simply by turning the dial. The TOOLS setting allows for above floor cleaning of upholstery, stairs, creases along baseboards, and other hard to reach areas. Simply choose the tool that is appropriate for the job, attach to flex hose and you are ready to go.

Microban® antibacterial protection

Microban antibacterial protection helps prevent the growth of harmful common household bacteria including E. coli, Salmonella and Staph. a. It helps to keep the unit fresher and cleaner between uses.

Scotchgard™ Protector

Carpet protection applied at the mill typically wears down over time from heavy foot traffic and everyday cleaning, including deep cleaning. To help restore this important protection, only BISSELL offers cleaning formulas with Scotchgard protector. This offers extra protection against dirt and tough stains to keep your carpets looking good longer.

Before you clean

1. Move furniture to another area if cleaning an entire room. (Optional)
2. Vacuum carpet thoroughly.
3. Plan your cleaning route to leave an exit path. It is best to begin cleaning in the corner farthest from your exit.

⚠️ WARNING:

To reduce the risk of fire, use only BISSELL deep cleaning formula for full size machines in your deep cleaner. Use of cleaning formulas that contain lemon or pine oil may damage this appliance and void the warranty. Chemical spot cleaners or solvent-based soil removers should not be used. These products may react with the plastic materials used in your deep cleaner causing cracking or pitting.



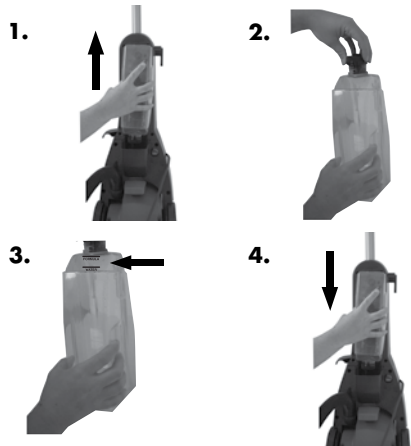
Operations

Before you clean continued

- 4. Pre-Treating** (optional) Pre-treat stubborn stains and highly soiled carpet in hallways and other high-traffic areas.
 - 4a.** Generously spray BISSELL Tough Stain Precleaner evenly over soiled area.
Caution: DO NOT OVER WET CARPET
 - 4b.** Wait 3-5 minutes before deep cleaning.

Fill the tank

1. Remove the solution tank by lifting it straight up, then away from the lower body.
2. Unscrew the black cap at the bottom of the solution tank.
3. Fill with hand hot tap water to the WATER line. Fill the rest of the tank with BISSELL 2X Formula to the FORMULA line. Replace and tighten the black cap.
4. Place solution tank on lower body.



Carpet cleaning

1. Set ReadyTools dial to "FLOOR CLEANING".
2. Plug into proper outlet.
3. Turn the power switch to the ON (I) position (located on the back of unit)
4. With foot, press the recline lever (located on the back of unit).
5. Cleaning Strokes. While pressing the spray trigger, make one slow forward wet pass and another one back. Caution: Do not overwet.
6. Release the spray trigger and make one slow forward and backward pass over the same area.
7. Repeat steps 4 and 5 until solution being pulled up appears clean.
8. Empty the collection tank when dirty water reaches the full line, or when the solution tank is empty.



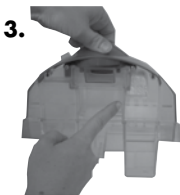
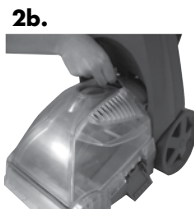
Empty the collection tank

1. Turn power switch OFF (O) and unplug power cord from outlet.
2. Remove the collection tank from base of unit.

Operations

Empty the collection tank continued

- 2a.** Release collection tank latches (on each side) by pulling up from the bottom of latch and then out.
- 2b.** Carefully remove the top of the tank by lifting up on the tank handle.
- 3.** Carry collection tank to a toilet or sink. To empty, pour out contents using opening at back of tank.
- 4.** Rinse collection tank thoroughly and replace on unit.
- 5.** Refill solution tank and continue cleaning.



Cleaning with Attachments

Your CleanView Reach is equipped with a hose and at least one attachment for cleaning stairs, upholstery, and more.

- 1.** Important! If using to clean upholstery, check upholstery tags.
 - 1a.** Check manufacturer's tag before cleaning. "W" or "WS" on the tag means you can use your CleanView® Reach. If the tag is coded with an "X" or an "S" (with a diagonal stripe through it), or says "Dry Clean Only", do not proceed with any deep cleaning machine. Do not use on velvet or silk. If manufacturer's tag is missing or not coded, check with your furniture dealer.
 - 1b.** Check for colourfastness in an inconspicuous place.
 - 1c.** If possible, check upholstery stuffing. Coloured stuffing may bleed through fabric when wet.
 - 1d.** Plan activities to allow upholstery time to dry.
 - 1e.** Vacuum area thoroughly.
- 2.** Follow the instructions on page 7 for filling the tank.
- 3.** Set the ReadyTools dial to the "TOOLS" setting.
- 4.** Attach the cleaning tool to the end of the hose.
- 5.** Plug in and turn the power switch to the ON position.

3.



4.



9.



Operations

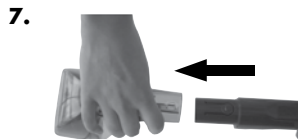
Cleaning with Attachments continued

6. Clean by pressing the spray trigger to spray solution onto the area to be cleaned. Slowly move the tool back and forth over the soiled surface. Release the spray trigger to suction dirty water. Continue to clean in the area, working in small sections, until dirt is removed.
Caution: Do Not Overwet.
7. When finished cleaning, remove and rinse tool(s) in clean, running water.
8. It is recommended that you suction clean water from a bowl to rinse out the hose.
9. Lift end of hose and stretch out to ensure all water is cleared from hose.
10. Wrap flex hose around hose wrap.
11. Empty collection tank and rinse out, following instructions on page 10 under "Cleaning after use."
12. Return ReadyTools dial to "FLOOR CLEANING" setting.

Deep reach tool attachment

(Select models only)

1. Follow the instructions on page 7 for Filling the tank.
2. Follow instructions 1-5 on page 8 under "Cleaning with attachments".
3. Set tool on stain and press the spray trigger to spray trigger solution onto the area to be cleaned.
4. Slowly move the tool back and forth over the soiled surface, keeping the tool in contact with the carpet.
5. Release the spray trigger and move tool slowly over the soiled area to suction up water and dirt.
6. Continue to clean the area, working in small sections, until no more dirt can be removed.
7. Remove tool from hose when finished. Clean under warm water before storing.
8. Follow cleaning attachment instructions on pages 8 and 9, instructions 8-12.

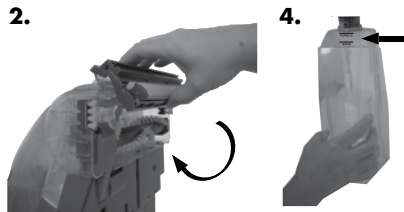


Operations

Hard floor cleaning

(Select models only)

1. Remove the collection tank (refer to steps 2a and 2b on page 8).
2. Attach the hard floor tool by hooking it into the front of the removable nozzle and rotate until it snaps firmly in place.
3. Replace the collection tank. Be sure to attach the two latches.
4. Fill the solution tank with warm tap water to the WATER fill line. Fill the rest with BISSELL 2X Hard Floor Solutions™ to FORMULA fill line.
5. Follow steps 1-8 under "Carpet Cleaning" on page 7 to continue cleaning.

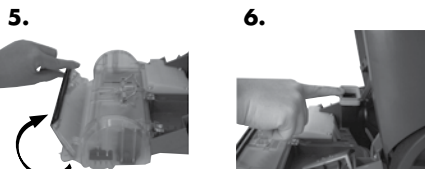
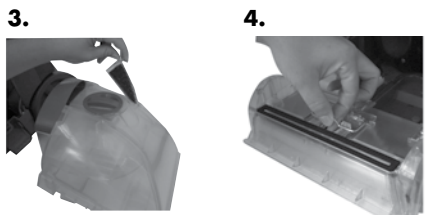
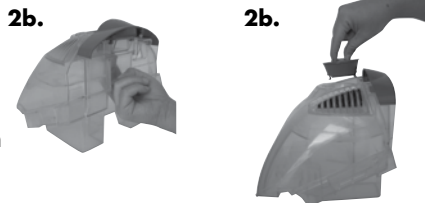


! WARNING:

To reduce the risk of fire and electric shock- when cleaning a hard floor, the BISSELL hard floor tool (203-5548) must be used and it must only be used with BISSELL 2X Hard Floor Solutions cleaning fluid intended for use with this appliance.

Cleaning after use

1. Unplug the unit.
2. Rinse collection tank thoroughly.
2a. Remove ReadyTools Dial by rotating it halfway between "TOOLS" & "FLOOR CLEANING."
2b. Pop out knob by using the opening on the back of the tank. Rinse and replace knob and collection tank.
3. Remove tank vent & foam filter (located on top of the collection tank) and rinse.
4. Clean nozzle window by lifting latch and removing from machine. Rinse under running water.
5. When finished replace nozzle and secure with latch.
NOTE: For best results, it is recommended that the nozzle is cleaned after each use.
6. Remove lint and hair from red gasket in base of unit. (Do not remove gasket)
7. Replace the collection tank to the base of the machine and secure with latches.



Maintenance and care

Machine storage

For best results, a few simple steps can assure your machine is well maintained after your cleaning is complete.

1. Wrap power cord around Quick Release Cord Wrap™ on side of the machine.
2. Wipe all surfaces with a soft cloth. Store cleaner upright in a protected, dry area.

NOTE: You may have cleaning solution remaining in the solution tank. You may store your machine this way for the next cleaning task, but never keep dirty water in the collection tank.



WARNING:

To reduce the risk of injury from moving parts and/or electrical shock, turn power switch OFF and disconnect plug from electrical outlet before performing maintenance or troubleshooting checks.



CAUTION:

Do not store unit where freezing may occur. Damage to internal components may result.

Troubleshooting

Reduced Spray OR No Spray in Upright Mode

Possible causes

1. Solution tank empty
2. Lint screen on solution tank cap clogged

Remedies

1. Refill tank with water and formula
2. Soak solution tank cap in warm water and then rinse under running water

Reduce Spray or No Spray Attachment

Possible causes

1. Solution tank empty
2. Spray nozzle clogged
3. Pump needs priming
4. Machine is reclined
5. ReadyTools dial is set to "FLOOR CLEANING"

Remedies

1. Refill tank with water and formula
2. Clean spray nozzle by rinsing tool under water
3. Place tool on floor and press spray trigger
4. Return machine to full upright position until it locks into place
5. Choose "TOOLS" setting on ReadyTools dial

Deep cleaner not picking up cleaning solution

Possible causes

1. Collection tank not aligned/secured
2. Collection tank full
3. Removable nozzle installed improperly
4. Removable nozzle full of debris
5. Red lint screen under collection tank clogged
6. ReadyTools dial not set properly

Remedies

1. Check tank alignment and secure with side latches
2. Empty tank
3. Unplug unit. Align four "hooks" into bottom first, then snap into place on top
4. Unplug unit. Remove nozzle and rinse under running water
5. Remove debris from lint screen
6. Choose either "FLOOR CLEANING" or "TOOLS" for desired cleaning method

Other maintenance or service not included in the manual should be performed by an authorized service representative.

Thank you for selecting a BISSELL product.

Please do not return this product to the store.

Replacement parts

Below please find a list of common replacement parts. While not all of these parts may have come with your specific machine, all are available to you for purchase, if desired.

Item	Part No.	Part Name
1	203-8116	Handle Assembly (includes screws)
2	203-5661	Solution Tank (Includes Cap and Insert Assembly)
3	203-8117	Collection Tank (with diverter)
4	203-5546	DirtLifter PowerBrush
5	203-8118	Cord Wrap (upper)
6	203-5658	Hose Wrap Clip
7	203-8119	Upper body with Screws
8	203-5659	Lower Hose Wrap
9	203-8120	Nozzle
10	203-5662	Solution Tank Cap & Insert

***Not all parts are included with every model.**



Accessories and formula

Item	Part No.	Part Name
1	203-6651	3" Tough Stain Tool
2	203-6652	Powered TurboBrush™ Hand Tool
3	203-6653	4" Upholstery Tool
4	203-6654	6" Stair Tool
5	203-6655	Spraying Crevice Tool
6	203-8113	Deep Reach™ Tool
7	203-5548	Hard Floor Tool,
8	81L5-E	1.5 L 2X Wash & Protect Professional Formula w/ Scotchgard™ Protector
9	66W9-E	1.5 L 2X Wash & Protect Pet Stain & Odour Formula w/ Scotchgard™ Protector
10	92F4-E	1.5 L 2X Wash & Protect Fresh Fragrance Formula w/ Scotchgard™ Protector
11	12W4-E	1.5 L 2X Wash & Protect Spring Breeze Fragrance Formula w/ Scotchgard™ Protector
12	33D2-E	1.5 L 2X Wash & Protect Lavender Fragrance Formula w/ Scotchgard™ Protector
13	56L9-E	473 mL 2X Hard Floor Solutions
14	0400-E	651 mL Tough Stain Precleaner

*Not all parts are included with every model.



Note: Additional BISSELL formula options may be available at your local retailer.

Warranty - BISSELL CleanView® Reach

This warranty gives you specific legal rights, and you may also have other rights which may vary from country to country. If you need additional instruction regarding this warranty or have questions regarding what it may cover, please contact BISSELL Consumer Services by telephone, or regular post as described below, or contact your local in country distributor.

Limited Two Year Warranty

Subject to the *EXCEPTIONS AND EXCLUSIONS identified below, BISSELL Homecare, Inc., will replace (with new or remanufactured components), at BISSELL's option, free of charge from the date of purchase by the original purchaser, for two years any defective or malfunctioning part do to manufacturers defect.

This warranty applies to product used for personal, and not commercial or rental service. This warranty does not apply to fans or routine maintenance components such as filters, belts, or brushes. Damage or malfunction caused by negligence, abuse, or use not in accordance with the User's Guide is not covered.

For UK inquiries:

Monday - Thursday 9 am — 5 pm

Friday 9 am — 4 pm

BISSELL Homecare (Overseas) Inc.

Ground Floor

226 Berwick Avenue

Slough

Berkshire SL1 4QT

United Kingdom

Telephone: 0844-888-6644

For all other inquiries:

Monday - Friday 8 am — 4 pm

BISSELL Homecare, Inc.

PO Box 1888

Grand Rapids, Michigan 49501 USA

Telephone: 01-616-453-4451

Fax: 01-616-453-1383

BISSELL HOMECARE INC. IS NOT LIABLE FOR INCIDENTAL OR CONSEQUENTIAL DAMAGES OF ANY NATURE ASSOCIATED WITH THE USE OF THIS PRODUCT. BISSELL'S LIABILITY WILL NOT EXCEED THE PURCHASE PRICE OF THE PRODUCT.

***EXCEPTIONS AND EXCLUSIONS FROM THE TERMS OF THE LIMITED WARRANTY**

THIS WARRANTY IS EXCLUSIVE AND IN LIEU OF ANY OTHER WARRANTIES EITHER ORAL OR WRITTEN. ANY IMPLIED WARRANTIES WHICH MAY ARISE BY OPERATION OF LAW, INCLUDING THE IMPLIED WARRANTIES OF MERCHANTABILITY AND FITNESS FOR A PARTICULAR PURPOSE, ARE LIMITED TO THE TWO YEAR DURATION FROM THE DATE OF PURCHASE AS DESCRIBED ABOVE.

If your BISSELL product should require service:

Call BISSELL Consumer Services at the numbers below and we will give you the location of a BISSELL Authorized Service Center in your area. If you have questions about your warranty or need replacement parts please contact the numbers below.

For UK inquiries:

Monday - Thursday 9 am – 5 pm

Friday 9 am – 4 pm

BISSELL Homecare (Overseas) Inc.

Ground Floor

226 Berwick Avenue

Slough

Berkshire SL1 4QT

United Kingdom

Telephone: 0844-888-6644

For all other inquiries:

Monday - Friday 8 am – 4 pm

BISSELL Homecare, Inc.

PO Box 1888

Grand Rapids, Michigan 49501 USA

Telephone: 01-616-453-4451

Fax: 01-616-453-1383

Or visit the BISSELL website - **www.bissell.com**

When contacting BISSELL, have model number of cleaner available.

Please record your Model Number: _____

Please record your Purchase Date: _____

NOTE: Please keep your original sales receipt. It provides proof of purchase date in the event of a warranty claim. See Warranty on page 15 for details.



Experts In Home Cleaning™

©2012 BISSELL Homecare, Inc.
Grand Rapids, Michigan
All rights reserved. Printed in China
Part Number 120-4420
Rev 9/11

Visit our website at:
www.bissell.com

Scotchgard is a trademark of 3M
Microban® is a registered trademark
of Microban Products Company