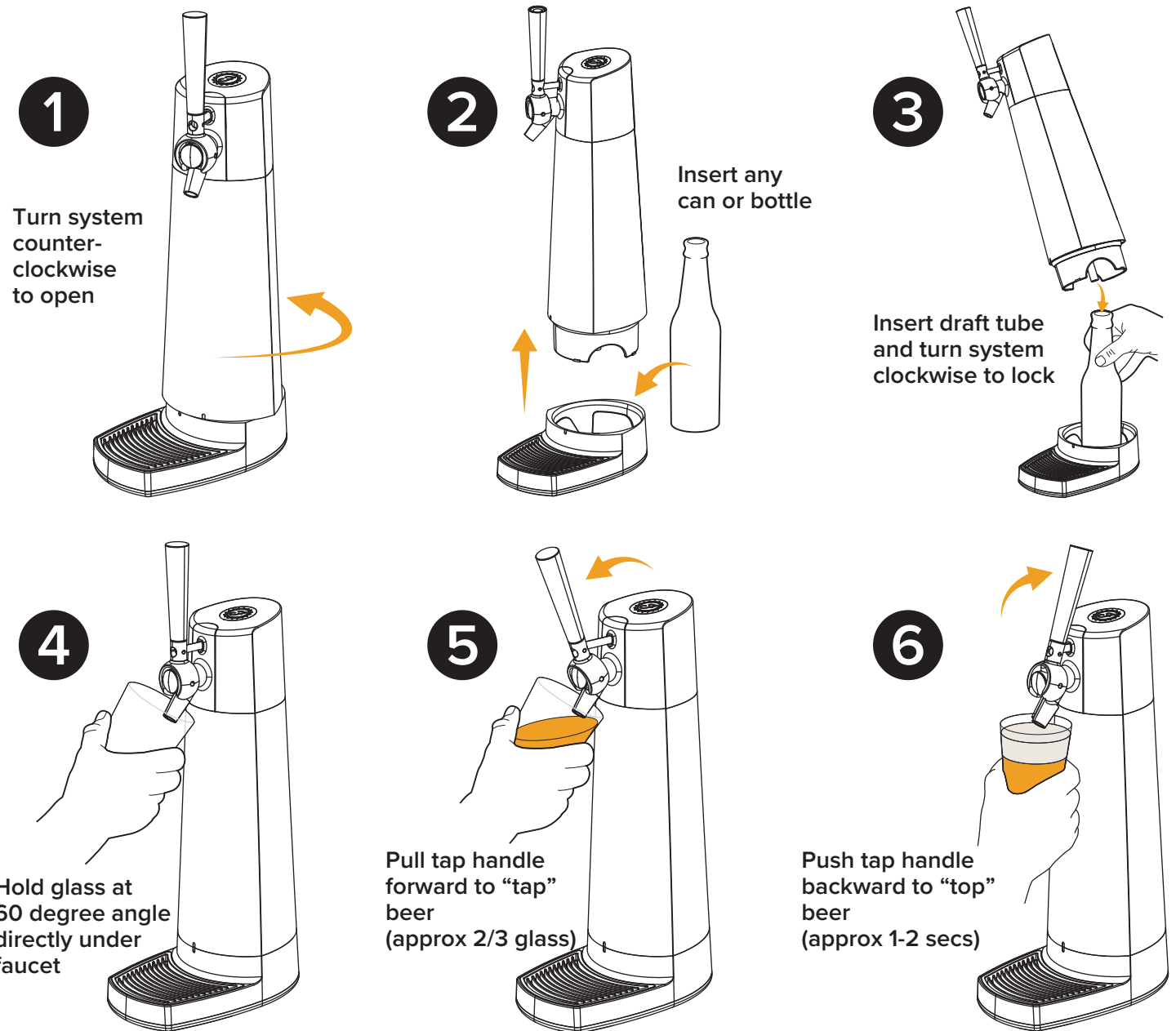
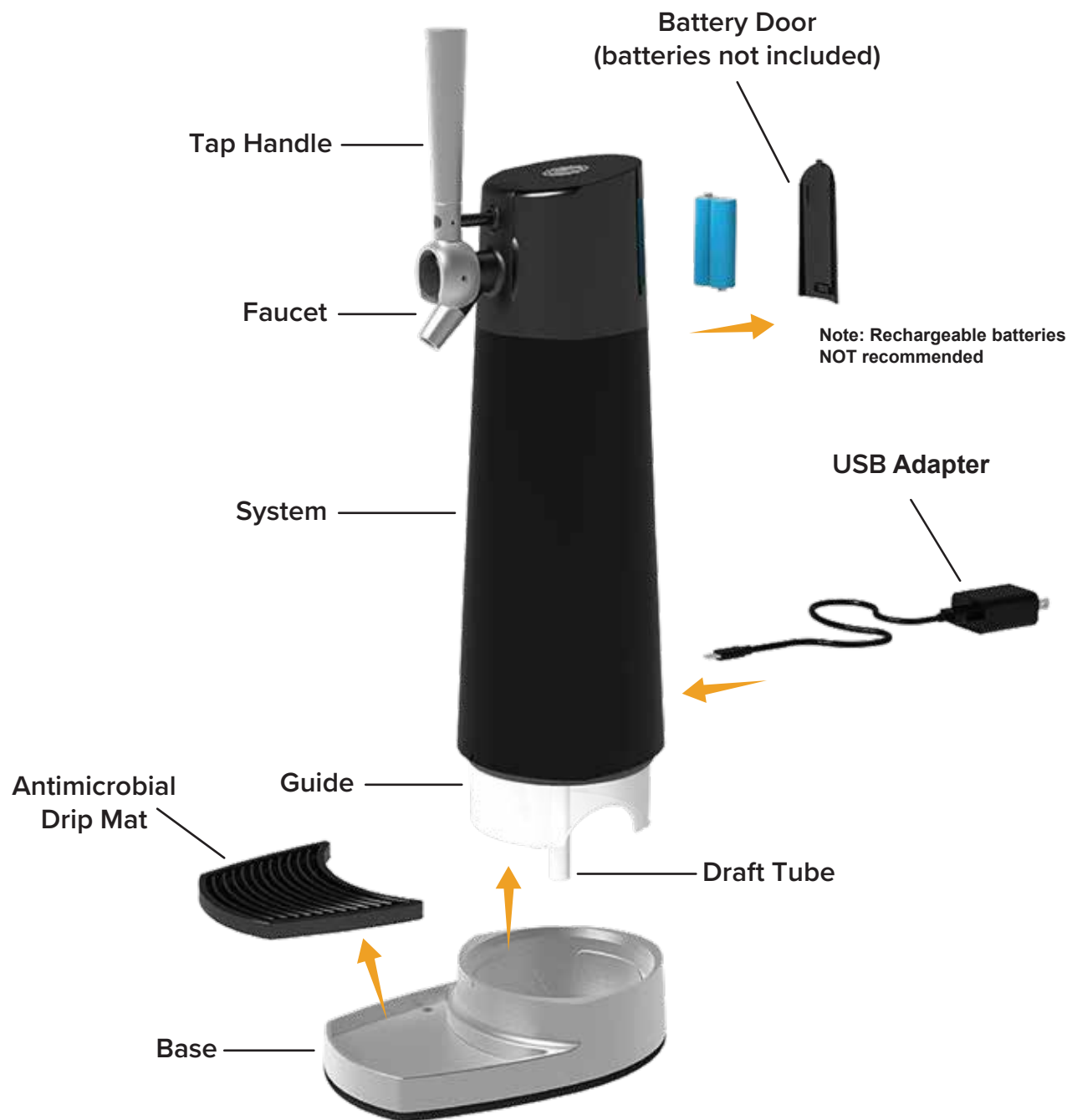




**FIZZICS**<sup>®</sup>  
**DRAFTPOUR**<sup>™</sup>

## Quick Start Guide





Questions about your DraftPour or having issues with operation? Call us at 800-544-6201. Monday-Friday 9:00am-5:00pm EST

### System Cleaning

**DraftPour must be cleaned per these instructions after use. Do not let system dry with beer residue in machine.**

- Place a glass or washed bottle filled with warm water into the system, insert tube and return system to base.
- Use a separate glass under faucet and pull the handle forward to run water through DraftPour for 4-5 seconds.
- Drip mat and base separate for easy soap and water cleaning. If necessary wipe off system with damp cloth.
- Allow system to air-dry off base over night.
- **IMPORTANT: DO NOT PUT ANY PART OF THE DRAFTPOUR INTO THE DISHWASHER AND DO NOT POUR ANY LIQUID DIRECTLY INTO THE DRAFTPOUR SYSTEM.**

