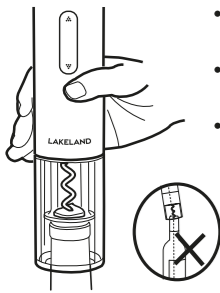
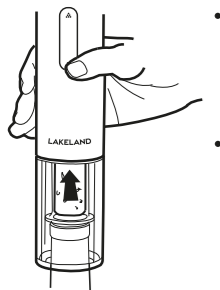


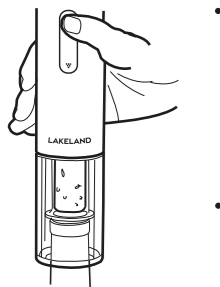
HOW TO USE THE WINE OPENER



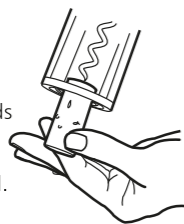
- Hold the bottle firmly with one hand and hold the wine opener with the other hand.
- Place the end of the wine opener over the top of the wine bottle.
- Keep the wine opener straight and inline with the bottle, or the cork may not pull smoothly.



- Press the pull (down) button and hold whilst also holding the bottle still. After around 6-8 seconds, the corkscrew will have drilled down into the corkscrew and automatically pulled it out of the bottle.
- When the cork is completely pulled out, the wine opener will automatically stop. The light at the bottom of the wine opener will be blue.



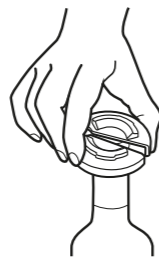
- To release the cork from the wine opener, press the release (up) button and hold for around 5-7 seconds until the cork drops out. The light at the bottom of the wine opener will be red.



SAFETY TIPS:

When using hold the body of the product tightly and hold the bottle firmly.

HOW TO USE THE FOIL CUTTER



- To remove the foil from the top of the bottle, take the foil cutter and place it on the opening of the bottle.
- Press the foil cutter so the blades pierce through the foil, and twist one full turn around the bottle neck. Remove the foil cutter, and the top of the foil will lift off with it.
- The foil cutter blades are very sharp, do not touch them.
- Please store this product out of reach of children.

HOW TO USE THE WINE BOTTLE COLLAR



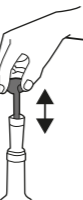
- Place the wine collar over the neck of a wine bottle to prevent stains to surfaces that the bottle comes into contact with such as tablecloths or counter tops.
- The felt inside the wine bottle collar is removable for hand washing.

HOW TO USE THE WINE AERATOR



- Wash before first use in warm, soapy water and dry thoroughly.
- Insert the rubber stopper of the wine aerator into the bottle.
- Tilt the bottle to allow the wine to flow through the wine aerator into your glass or decanter. Hand wash only.

HOW TO USE THE VACUUM PUMP



- Insert the vacuum pump into the neck of the bottle.
- Move the handle up and down approximately 15 times, until you start to feel the vacuum hold the lever down. This works more effectively with half a bottle or more.
- Put the sealed wine bottle into the wine cabinet or refrigerator. It is recommended to consume the wine within 7 days.
- When ready, carefully wiggle the vacuum pump out of the bottle.
- Wipe clean with a damp cloth.

FREQUENTLY ASKED QUESTIONS

Question: Why is the wine opener not working when the buttons are pressed?

Answer: The battery charge may be too low. One indicator light will flash when the battery is low, avoid using the wine opener before charging. Charge the wine opener for a minimum of 2 minutes before using. It takes 2.5 hours to fully charge. **DO NOT** use the wine opener whilst charging.

If above operations are correct and the wine opener is still not working properly, please contact the Lakeland customer care on 015894 88100.

TECHNICAL INFORMATION

Input DC: 5V – 0.2A – 1000mAh
Output DC: 5V – 0.2A – 1000mAh
Power: 10W

AC Adaptor

AC Voltage input : 100 – 240V
Frequency : 50/60Hz

This product contains a Lithium Battery.

RECYCLING YOUR ELECTRICALS

Along with many other high street retailers, Lakeland has joined a scheme whereby customers can take their unwanted electrical products to recycling points set up around the country. Visit www.recycle-more.co.uk to find your nearest recycling point.

Lakeland
Alexandra Buildings, Windermere,
Cumbria, UK LA23 1BQ
Tel: +44(0)15394 88100 lakeland.co.uk

LAKELAND

INSTRUCTION BOOKLET

RECHARGEABLE WINE OPENER SET



Model: 63305

RECHARGEABLE WINE OPENER SET

Thank you for choosing the Lakeland Rechargeable Wine Opener Set.

Please take a little time to read this booklet before getting started and keep it in a safe place for future reference.

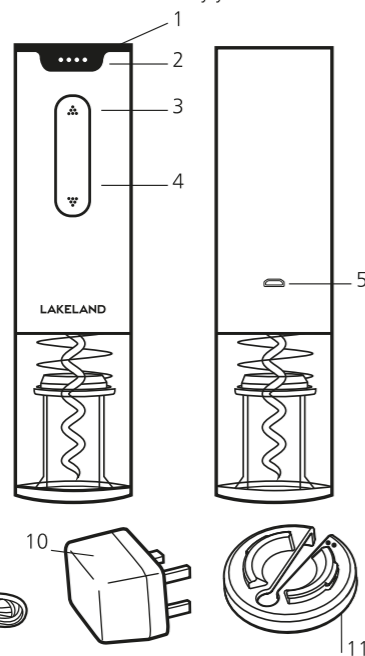
This Rechargeable Wine Opener Set will allow you to remove a cork from a wine bottle at the touch of a button and contains everything you need to pour the perfect glass of wine.

Here at Lakeland, our award-winning family-owned business still offers the same excellent quality, value for money and exceptional customer service as when we founded the company back in the 1960s.

Our products are hand-picked and thoroughly tested so you can be sure that everything you purchase will be a pleasure to use for many years to come.

PRODUCT FEATURES

1. Wine opener
2. Power indicator
3. Release button
4. Pull/extraction button
5. Micro USB charging port (back)
6. Wine collar
7. Tulip wine aerator
8. Vacuum pump
9. Micro USB cable
10. Adaptor
11. Foil cutter



SAFETY CAUTIONS

Carefully read all the instructions before using the appliance and keep in a safe place for future reference. Always follow these safety cautions when using the appliance to avoid personal injury or damage to the appliance. This appliance should be used only as described in this instruction book.

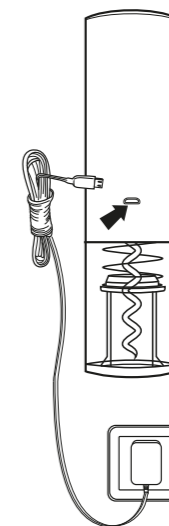
• This appliance can be used by children aged from 8 years and above and persons with reduced physical, sensory or mental capabilities or lack of experience and knowledge if they have been given supervision or instruction concerning use of the appliance in a safe way and understand the hazards involved. Children shall not play with the appliance. Cleaning and user maintenance shall not be done by children unless they are older than 8 and supervised.

- Make sure your electricity supply matches the voltage shown on the appliance.
- Ensure all packaging materials and any promotional labels or stickers are removed from the appliance before the first use.
- Always inspect the appliance before use for noticeable signs of damage. Do not use if damaged or has been dropped. In the event of damage, or if the appliance develops a fault contact the Lakeland customer care team on 015394 88100.
- Do not use this appliance if the lead is damaged. Contact the Lakeland customer care team on 015394 88100.
- Always use the appliance on a dry, level, heat resistant surface, away from any other heat sources.
- Unplug from the mains when not in use and before cleaning. To disconnect, turn the socket to "off" and remove the plug from the mains socket.
- Do not use any accessories or attachments with this appliance other than those recommended by Lakeland.
- To protect against fire, electric shock or personal injury, do not immerse cord, plug or base in water or other liquids.

- Do not leave the lead hanging over the edge of a kitchen table or worktop. Avoid contact between the lead and hot surfaces.
- For indoor use only.
- For domestic use only.
- This appliance should be used for preparation of drink as described within the instructions for use that accompany it.
- Always ensure that your hands are dry before removing the plug from the mains socket. Never pull the plug out of the mains socket by its lead.
- To avoid injury or possible fire, do not cover the appliance when in use.
- Do not connect this appliance to an external timer or remote control system.
- An extension cable may be used with care. The electrical rating of the cable should be at least as great as the appliance. Do not allow the cable to hang over the edge of the worktop or touch any hot surfaces.
- This appliance complies with the basic requirements of Directives 2014/30/EU (Electromagnetic Compatibility) and 2014/35/EU (Low Voltage Directive).
- **WARNING:** A cut off plug inserted into a 13 amp socket is a serious safety (shock) hazard. Ensure the cut off plug is disposed of safely.
- **CAUTION:** The plastic bags used to wrap this appliance or the packaging may be dangerous. To avoid risk of suffocation, keep these bags out of reach of babies and children. These bags are not toys.
- When the power cord is damaged, do not touch the AC power cord with your hands to avoid danger.
- Keep the corkscrew away from fingers, long hair, loose clothing and utensils to avoid any damage.
- Do not twist or use force on the wine opener when in use as this will cause damage.
- Do not use the wine opener whilst charging.

CHARGING THE WINE OPENER

- Insert the micro USB plug into the charging hole of the wine opener.
- Recharge using the micro USB cable provided and USB power adaptor or USB recharging point - 100V - 240Vac - 50/60Hz.
- Insert the other end firmly into UK plug adaptor or USB recharging point. The power indicator lights will start flashing blue from left to right, indicating that the wine opener is charging. The bottom of the wine opener will also be illuminated blue.
- When fully charged, the 4 power indicator lights will all be illuminated blue and stop flashing. It takes 2.5 hours to recharge.
- **WARNING:** One blue light will flash when the battery power is low. Charge the wine opener before use.
- Quick charging enables the wine opener to open two bottles after 2 minutes of charging.



- Before the first use, charge the wine opener for approximately 2 hours.
- To protect the lithium battery, we recommend not to charge longer than 4 hours at a time. This will help to prolong the life of the battery.

client **LAKELAND** SKU **63305**

job e24674

finished size 420 x 148.5mm

colours black + matt finish

created
by

ECLECTIC

T +44 15394 42581

E hello@weareeclectic.co.uk