

# LAKELAND

## Dual Chamber Spray Mop

### Use

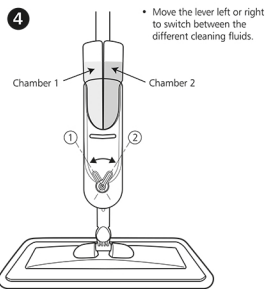
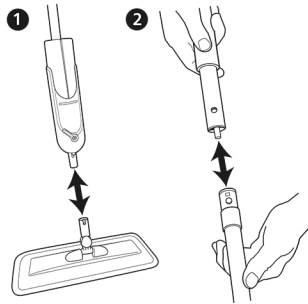
- Unique dual chambered spray mop allows you to switch effortlessly between your choice of cleaning fluid using the lever on the front.
- Ideal for wood floor cleaners, stone and tile cleaners, just water or the Lakeland spray mop anti-bacterial cleaner.
- Lightweight.
- Pull the trigger to release the cleaning fluid in front of the mop head.
- No need to use a bucket.
- The microfibre cleaning pads remove dirt, dust, grease and pet hair from all types of sealed hard floors.
- The swivel head gives ease of movement around objects and corners.
- Can be stored using the hook on the end of the handle.
- Simply pull to remove the cleaning pad for washing.
- Made from PP, ABS and aluminium with a microfibre pad.

### Care instructions

- Machine washable up to 30°C.
- Do not iron, tumble dry, bleach or use fabric softeners.
- Wash dark colours separately.

### Assembly instructions

- Click the three parts together as shown in diagrams 1 and 2 below.



Size approx.:  
Mop height  
122.5cm (48 1/4").

Pad dimensions:  
14 x 42cm (5 1/2" x 16 1/2").



We'd love to hear from you.  
Call us on 015394 88100,  
email us at [info@lakeland.co.uk](mailto:info@lakeland.co.uk)  
or drop us a line at  
Lakeland, Alessandro Buildings,  
Windemere, Cumbria LA23 1RQ.  
Made for and imported by Lakeland.  
Made in China.

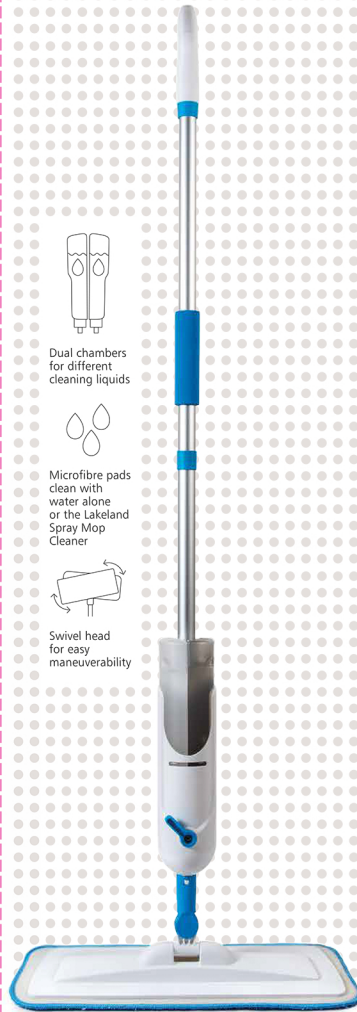


Other products in this range  
24524 Spray Mop Replacement Pad.

5 052779 462250  
visit us at [lakeland.co.uk](http://lakeland.co.uk)



# LAKELAND



Dual chambers  
for different  
cleaning liquids



Microfibre pads  
clean with  
water alone  
or the Lakeland  
Spray Mop  
Cleaner



Swivel head  
for easy  
maneuverability



Dual chambers allow you to  
use different cleaning fluids  
easily and quickly.



Integral storage loop  
and hand trigger.



Strong directional spray.

# Dual Chamber Spray Mop

The dual chambers make it  
easy to switch between  
cleaning fluids for  
multi-surface floors.