

# CRUX

## 10-Cup Thermal Programmable Coffee Maker Instruction Manual

Styled for Life  
Designed & Engineered in New York City

## **Thank you for Purchasing this Product**

You may already be familiar with using a similar product, but do please take the time to read these instructions – they have been written to ensure you get the very best from your purchase.

### **Safety is Important**

To ensure your safety and the safety of others, please ensure you read the Product Safety and Electrical Safety Information before you operate this product. Keep these instructions in a safe place for future reference.

### **Technical Information**

Voltage/Frequency: 220-240V-50Hz 1200W

## Table of Contents

Product Safety .....	2-4
Electrical Safety.....	5
Thermal Carafe.....	6
Coffee Yield.....	6
Permanent Coffee Filter Basket .....	6
Features.....	7
Before Using For The First Time.....	8
Setting Up The Machine.....	8-9
Setting The Clock .....	9
Brew Strength Selection.....	10
Setting The Auto Start.....	10
Pause and Serve.....	11
Auto shut off and Time Since Brew.....	11
Brewing a Second Carafe of Coffee .....	12
Hints for Great Tasting Coffee .....	13
Servicing .....	13
Care & Cleaning Instructions .....	14
Auto Clean.....	14-15
Descaling .....	15
Storage .....	16
Guarantee.....	17
Disposal Information.....	18

## **Product Safety**

When using electrical appliances, basic safety precautions should be followed including the following: Read all instructions before use.

### **IMPORTANT**

- This appliance can be used by children aged from 8 years and above and persons with reduced physical, sensory or mental capabilities, or lack of experience and knowledge, if they have been given supervision or instruction concerning the use of the appliance in a safe way and understand the hazards involved.
- Cleaning and user maintenance shall not be made by children unless they are 8 years or above and supervised.
- Children shall not play with the appliance
- Always use this appliance on a stable, level surface, close to a power socket and out of reach of young children.
- Always ensure that hands are dry before handling the plug or switching on the appliance.

- Always carry out regular checks on the appliance and power cord. Should there be any signs of damage, do not attempt to use or repair. This appliance has no user serviceable parts.
- Always unplug this unit when not in use and before cleaning.
- Always allow the appliance to fully cool down before cleaning or storing.
- Always exercise caution, this appliance produces heat and steam during use. Proper precautions must be taken to prevent burns and injury. Do not touch hot parts during use.
- Never immerse the appliance, cord or plug into water or any other liquid. This is to protect against electrical shock.
- Never use this appliance for other than intended use. This appliance is for household use only. Do not use outdoors.
- Never open the top cover while coffee is brewing as scalding may occur.
- Never use your Coffee Maker without any water in it.

- Never use any other liquids in this unit other than water, do not mix or add anything to the water placed in the appliance other than during cleaning.
- Never allow young children to use this appliance, close supervision is necessary when this appliance is in use near young children.
- Never let the power cord hang over the edge of a worktop, touch hot surfaces or become knotted, trapped or pinched.
- Never place the Coffee maker on or near heat sources. The carafe is for use with the appliance only it is not suitable to be used on the hob or in a microwave oven.
- Never use any accessories not recommended by the appliance manufacturer with the unit.
- Never place any objects on top of the unit while in operation.
- Never leave this appliance unattended during use.
- Never use steel wool or abrasive cleaners to clean the thermal carafe as this will damage the cosmetic finish, only use a soft damp cloth.

## **Electrical Safety**

Read these instructions thoroughly before using this appliance or connecting it to the mains supply.

**A 13 amp BS1362 ASTA approved fuse must be fitted.**

**This appliance must be earthed.**

**There are no user-serviceable parts inside this appliance.**

**Always refer servicing to qualified service personnel.**

**The mains lead of this product is not replaceable by the user.**

**If the mains lead is damaged, the entire appliance should be returned to an approved Service Centre for repair.**

**Do not allow this product to be exposed to rain or moisture during use or storage.**

Before switching on, make sure that the voltage of your electricity supply is the same as that indicated on the rating plate. Connecting it to any other power source may cause damage. The mains lead of this product is not replaceable by the user. If the mains lead is damaged, the entire appliance should be returned to the Customer Service Department or replaced by suitably qualified persons in order to avoid a hazard.

## Thermal Carafe

Your coffee maker comes with a thermal carafe which will keep your coffee hot without spoiling the flavour. Traditional coffee makers have a hot plate which can burn the coffee and make it bitter and undrinkable. The thermal carafe is double insulated to keep coffee hot without compromising the flavour. The stainless steel body is more robust than the traditional glass carafe.

### Carafe Safety Precautions

1. This carafe is designed to be used only on the warming plate of your Coffee Maker. Do not use in a conventional oven.
2. Allow carafe to cool before washing or adding liquids.
3. Do not set empty carafe on a hot heating surface. Do not clean with steel wool pads, abrasive cleanser, or any other materials that may scratch.
4. Do not bump or scratch the carafe. Never operate the Coffee Maker with a carafe that has boiled dry.

## Coffee Yield

10 Cup Coffee Maker: 10 (150ml) cups

**NOTE:** A 150ml cup is an industry standard and is used by most Coffee Maker manufacturers. To fill your favourite over-sized mug, fill Coffee Maker reservoir with enough water for 3 to 4 cups.

**WARNING: TO AVOID THE RISK OF FIRE OR ELECTRIC SHOCK, DO NOT UNSCREW THE UNDER SIDE COVER. THERE ARE NO USER-SERVICEABLE PARTS INSIDE. REPAIR SHOULD BE DONE BY AUTHORIZED SERVICE PERSONNEL ONLY.**

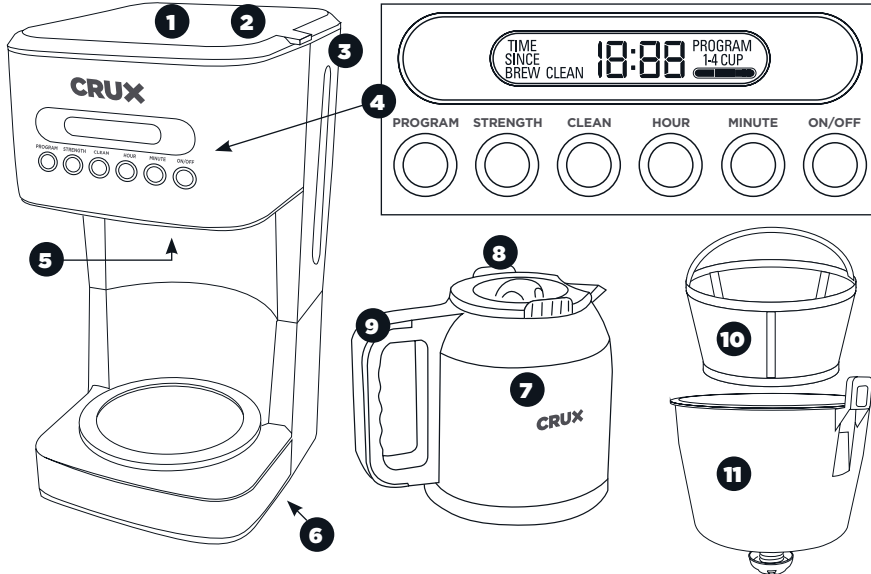
## Permanent Coffee Filter Basket

The permanent coffee filter basket takes the place of disposable paper filters.

Simply place the permanent coffee filter basket into the removable filter basket holder.

Unfold and use the handle to lift the basket of used coffee grounds up and out of the Coffee Maker; fold handle down to close the water reservoir lid.

## Features



Product may vary slightly from illustration

- |                                |                                       |                             |
|--------------------------------|---------------------------------------|-----------------------------|
| 1. Coffee Maker Lid            | 5. Pause and Serve Valve (not shown)  | 8. Carafe Lid               |
| 2. Water Reservoir (not shown) | 6. Cord Storage (not shown)           | 9. Carafe Handle            |
| 3. Water Level Indicator       | 7. Double Wall Stainless Steel Carafe | 10. Permanent Coffee Filter |
| 4. Control Panel               |                                       | 11. Removable Filter Holder |

## Before Using For The First Time

**CAUTION:** To protect against electrical shock, do not immerse the Coffee Maker or allow power cord to come into contact with water or other liquids.

1. Remove all packing material and labels from the inside and outside of the Coffee Maker. Place the unit on a flat, clean surface.
2. Before preparing coffee, thoroughly clean the thermal carafe with lid, removable filter holder and permanent coffee filter in hot, soapy water. Rinse and dry. Replace disassembled parts. See Care & Cleaning Instructions for a detailed description.

**NOTE:** The permanent filter and removable filter holder are all top rack dishwasher safe. The reusable scoop is also dishwasher safe but it should be placed in the machine alongside the cutlery.

3. Clean the inside of the Coffee Maker by brewing 2 full carafes of tap water (see “setting up the machine”). Do not add the permanent coffee filter or ground coffee for this initial cleaning.

**NOTE:** At the end of the first cycle, allow 15 minutes for the unit to cool.

4. Brew a second carafe of fresh water.
5. Wait an additional 15 minutes to allow the unit to cool before brewing your first carafe of coffee.

## Setting Up The Machine

**IMPORTANT:** Before brewing, always check to make sure water level is past the MIN line and add water if needed. Never exceed the MAX fill line.

**NOTE:** The amount of brewed coffee will always be less than the amount of water placed into the water reservoir; as much as 10% is absorbed by coffee grounds and filter.

1. Lift to open the Coffee Maker lid. Fill carafe with cold water and pour into water reservoir at the back of the unit. The stepped water level indicator can be easily viewed inside unit.
2. Secure the lid onto the carafe by aligning the insert arrow on the lid with the arrow on the thermal carafe, and turn anti-clockwise to lock the lid in position. Place the empty carafe on the warming plate.
3. Place the permanent filter in the removable filter holder. Measure 1 scoop with the provided scoop, of ground coffee suitable for filter coffee machines for each cup of coffee desired. For stronger or milder coffee, adjust amount of coffee to suit your taste.

4. Lower the filter holder down into the housing. Close the lid.
5. Plug the power cord into an electrical socket, the background indicator will illuminate, and 12:00 will flash. The backlight indicator will go into sleep mode within 15 seconds if no further buttons are selected.
6. Press the ON/OFF button. The Coffee Maker will begin the brew cycle.  
**NOTE:** To interrupt the brew process at any time, press the ON/OFF button until you hear a beep.
7. Upon completion of the brew cycle, wait at least 1 minute until the dripping coffee from the flow valve into the carafe has stopped. The carafe lid should be kept in place to facilitate safe serving and help keep coffee at a proper serving temperature. Tilt the carafe slightly and pour the hot coffee very slowly, so that the flow of the brewed coffee does not exceed the width of the spout.  
  
Once the brew cycle is complete, the LCD screen will show the TIME SINCE BREW icon and 0:00 will begin counting up. This represents the time since the brew cycle finished. To shut down the unit, press the ON/OFF button.
8. Press ON/OFF button to turn the Coffee Maker OFF when the carafe is empty or when unit is not in use.

## Setting The Clock

1. When the coffee maker is plugged in 12:00 will flash.
2. Press HOUR button to select the Hour, this is a 24 hour clock. Press and hold HOUR to change the hour faster.
3. Press MINUTE button to select the minutes. Press and hold MINUTE change the minutes quicker.
4. Press on the PROGRAM button to confirm the time
5. To re-set the clock: press and hold the PROGRAM button until the previously set time flashes. Then follow the clock setting method.

## Brew Strength Selection

1. To select the strength of coffee push on the strength button.
2. For regular strength press once, the strength indicator bar on the control panel will show 1 bar.
3. For gourmet strength press twice, the strength indicator bar on the control panel will show 2 bars.  
The gourmet setting adjusts the brewing cycle of a full pot of coffee to extract a higher percent of solubles. This results in a more flavourful pot of coffee.
4. For bold strength press 3 times, the strength indicator bar on the control panel will show 3 bars.  
The Bold setting adjusts the brewing cycle of a full pot of coffee, allowing more time for the coffee to “steep” to extract further oils and flavour from the coffee bean. This results in a bolder tasting pot of coffee
5. For 1-4 cup mode press strength 4 times, the 1-4 cup will show on the control panel. Automatically adjusts the brewing process for maximum flavour when brewing small quantities. Ideal for brewing 1 to 4 cups of coffee.

## Setting The Auto Start

Press the PROGRAM button. The clock will flash 12:00. Follow the clock setting method to set hour and minute. To confirm your selection, press the program button. The unit will beep and display the current time along with the word PROGRAM. Once the current time reaches the set time for the auto brew, the unit will automatically start the brewing cycle.

## Pause and Serve

If you wish to serve a cup of coffee before the brew cycle is complete, simply remove carafe from the warming plate. Dripping will automatically cease. Return the carafe onto the warming plate; dripping will resume.

1. After approximately 2 cups of coffee have been brewed, the carafe may be slowly removed and the coffee will stop dripping.
2. The flow valve is located on the bottom of the filter holder and is activated when the carafe is removed. This design makes it possible for you to remove the carafe and pour a cup of coffee before the entire carafe is brewed.
3. When using this feature, make sure that the carafe is replaced under the filter holder within 30 seconds to prevent overflow.

**CAUTION:** To prevent injury when utilizing the pause and serve feature, replace carafe within 30 seconds after removing during the brewing process.

## Auto shut off and Time Since Brew

When the brew cycle is complete, the coffee maker will beep and the light around the ON/OFF button will turn off. TIME SINCE BREW will appear on the LCD display; The TIME SINCE BREW will count up from 0:00 to 02:00 to let you know how fresh your coffee is.

After 2 hours the coffee maker will beep and will automatically turn off. The TIME SINCE BREW icon will disappear. The current time will reappear on the LCD display.

## Brewing a Second Carafe of Coffee

1. To brew another carafe of coffee, press the ON/OFF button to turn the Coffee Maker OFF.

**CAUTION:** Failure to allow Coffee Maker to cool sufficiently could cause hot steam and spray when the water is added to the water reservoir. The hot steam can cause severe burns.

2. Lift the Coffee Maker lid. Unfold the handle, lift and remove the permanent coffee filter; discard used coffee grounds, rinse.
3. Lift the removable filter holder up and out of the Coffee Maker.
4. Rinse the thermal carafe and removable filter holder in cool, clean water.

**IMPORTANT:** Before brewing a second carafe, always check to make sure water level is past the MIN line; add the desired amount of cold water into the water reservoir.

5. Place empty carafe on the warming plate.
6. Place the permanent filter into the removable filter holder. Measure 1 spoonful of ground coffee for each cup of coffee desired.
7. Place the filter holder down into the housing. Close the lid.
8. Press the ON/OFF button. Brewing will begin.

## Hints for Great Tasting Coffee

- A clean Coffee Maker is essential for making great tasting coffee. Regular cleaning, as described in the Care & Cleaning Instructions and Descaling sections of this Instruction Manual is highly recommended.
- Always use fresh, cold water in your Coffee Maker.
- Finer grinds, such as filter coffee, promote fuller extraction and provide rich, full-bodied coffee. Regular grind will require slightly more coffee per cup to provide the strength of a finer grind.
- Store coffee in a cool, dry place. Once coffee has been opened, keep it tightly sealed in the refrigerator to maintain freshness.
- For optimum coffee flavour, buy whole beans and grind them finely just before brewing.
- Do not re-use coffee grounds since this will greatly impair coffee flavour.
- Reheating coffee is not recommended. Coffee is at its peak flavour immediately after brewing.
- If adding milk to your coffee it is recommended to add hot milk, by adding milk from the fridge this will reduce the temperature of your coffee down considerably.
- Small oil droplets on the surface of brewed, black coffee is due to the extraction of oil from the coffee grounds. Oiliness may occur more frequently if heavily roasted coffees are used. Over extraction may also cause oiliness, indicating a need to clean your Coffee Maker.

## Servicing

This appliance requires little maintenance. It contains no user-serviceable parts. Any servicing requiring disassembly other than cleaning must be performed by a qualified appliance repair technician.

## Care & Cleaning Instructions

1. Always make sure the Coffee Maker is unplugged and the warming plate is cool before attempting to clean.
2. After every use, remove the permanent coffee filter, discard used coffee grounds and rinse thoroughly.
3. Wash the removable filter holder and thermal carafe in hot, soapy water. If necessary, scrub the inside of the carafe lid with a kitchen brush. The permanent filter and removable filter holder are all top rack dishwasher safe. The reusable scoop is also dishwasher safe but it should be placed in the machine alongside the cutlery.
4. Wipe the exterior with a damp cloth to remove superficial stains. Do not use metal scouring pads or abrasive cleansers.
5. Dry and replace disassembled parts. Make sure the removable filter holder drops down and is properly seated into the housing.
6. Close the lid.

## Auto Clean

We recommend cleaning your Coffee Maker once a month.

1. Combine 6 cups of white vinegar and 4 cups of cold water in the carafe.
2. Pour into the water reservoir.
3. Place an 8 to 12 cup cupcake style paper filter in the removable filter basket. Insert filter basket into filter basket holder and close lid.
4. Make sure the lid of the carafe is in place and place the empty carafe on the keep warm plate.
5. Press the CLEAN button, CLEAN will appear on the LCD and the unit will beep.

6. Press the ON/OFF button to start the cleaning cycle. The light around the ON/OFF button will turn on and the unit will beep.
7. Once the cleaning cycle is complete, the light around the ON/OFF button will turn off and the unit will beep.
8. Discard all water/vinegar solution from the carafe and the water tank.
9. Repeat the brew cycle 2-3 times with cold water before brewing coffee again

## Descaling

Special cleaning of your Coffee Maker is recommended from time to time, depending on frequency of use and quality of water used in the unit. If water in your area is especially hard, the following cleaning procedure should be performed every 2-4 weeks, since minerals in water can detract from the flavour of the coffee and possibly lengthen brew time.

1. Fill carafe with 1 part white vinegar to 3 parts cold water. Pour water and vinegar solution into the water reservoir.
2. Brew the vinegar solution.  
**NOTE:** During cleaning, more steam will occur than during normal coffee brewing.
3. Press the ON/OFF button to turn the Coffee Maker OFF. When liquid stops dripping from filter holder into the carafe, remove the carafe and allow liquid to cool for 15 minutes. When cooled, lift lid and pour liquid back into the water reservoir.
4. Close the lid. Return carafe to the warming plate.
5. BREW THE VINEGAR SOLUTION again, allowing all the cleaning solution to empty into the carafe. After dripping has stopped, discard contents of the carafe.
6. Allow Coffee Maker to cool for 15 minutes, rinse by brewing a carafe full of cold water. Insert the clean permanent coffee filter into the removable filter holder before brewing.
7. At end of brew cycle, press the ON/OFF button to turn Coffee Maker OFF. Discard water in the carafe. Wash carafe, permanent coffee filter, and removable filter holder in hot soapy water. Dry parts thoroughly.
8. When Coffee Maker has cooled, wipe exterior with a dry cloth.

## **Storage**

1. Unplug unit and allow to cool.
2. Store Coffee Maker in its box or in a cool, dry place.
3. Never store unit while it is still plugged in.

## **Guarantee**

This product is guaranteed for 3 years from the date of original purchase against mechanical and electrical defects.

Please register at <http://mpl.direct/cruzwarranty> within 28 days of purchase.

Any defect that arises due to faulty materials or workmanship will either be replaced or refunded where possible during this period by the dealer from whom you purchased the unit.

The following conditions apply:

- The guarantee does not cover accidental damage, misuse, cabinet parts, knobs or consumable items.
- The product must be correctly installed and operated in accordance with the instructions contained in this manual.
- It must be used only for domestic purposes.
- The guarantee will be rendered invalid if the product is re-sold or has been damaged by inexperienced repair.
- Specifications are subject to change without notice.
- The manufacturer disclaims any liability for the incidental or consequential damages.
- The guarantee is in addition to, and does not diminish your statutory or legal rights.
- Valid in the UK only.

**Customer Helpline: 0345 467 6743**

## Disposal Information

Waste electrical products should not be disposed of with household waste. Please recycle where facilities exist. Check with your local authority for recycling advice.



This symbol on appliance, instruction manual and packaging puts your attention to this important issue. The materials used in this appliance can be recycled. By recycling used domestic appliances you contribute an important push to the protection of our environment. Ask your local authorities for information regarding the point of recollection


For technical queries, please contact: MPL Home Ltd,  
IMEX, 575 -599 Maxted Road, Hemel Hempstead, Herts, HP2 7DX









For customer service questions or comments  
0345 467 6743  
cruxkitchen.co.uk  
 crux.kitchen

CRUX is a trademark of 8479950 Canada Inc.  
All rights reserved.

SO-314291 Rev. 7