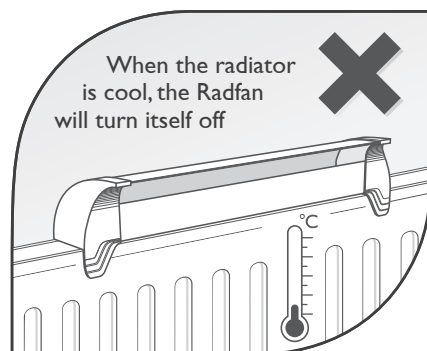
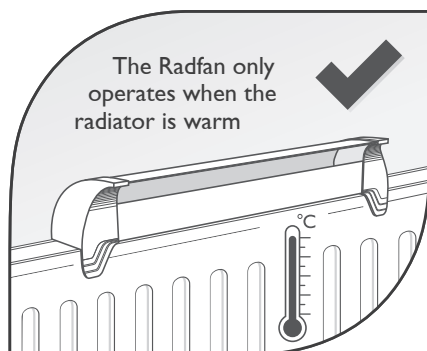
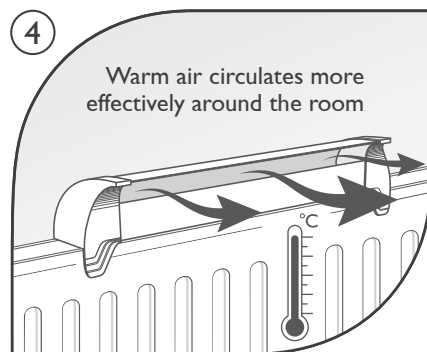
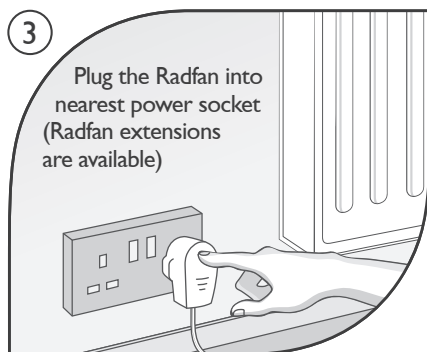
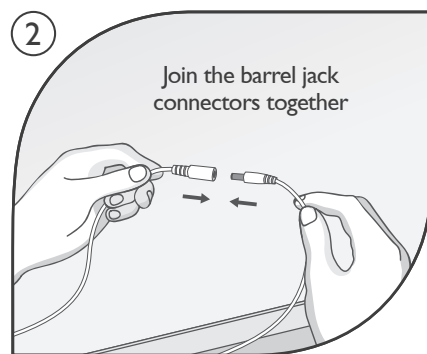
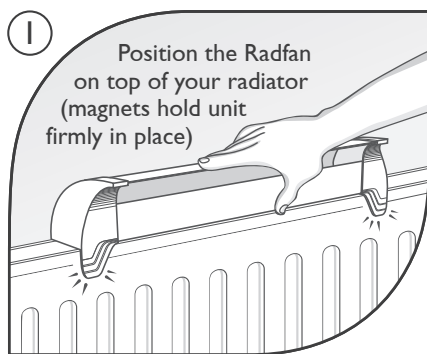


Instructions



How to use your Radfan



Maintenance

Before cleaning the Radfan always disconnect from the mains power.

Do not use detergent or abrasive cleaning solutions, as these may damage the unit.

Only use a damp cloth to clean the unit or dry cloth to remove any dust.

Safety Notes

- Do not place the Radfan on any other heating device other than a water-filled radiator (such as electric radiator/heater, oven, gas hob).
- Do not use the Radfan in a bathroom, shower room, wetroom or near any other water source.
- Do not use any other power adaptor other than the one provided with the Radfan.
- If the unit appears faulty do not attempt to use it and do not attempt to repair the Radfan yourself - consult your supplier for guidance.

Important

Volts: 12V.
Frequency: 50-60Hz.
Power: 2 fan model - 2W.
4 fan model - 4W.
6 fan model - 6W.

Before using the appliance check that voltage of the mains supply is suitable for use with the Radfan.



This product is marked according to the European Directive (2002/96/EC) on Waste and Electronic Equipment (WEEE). This symbol indicates that this product must not be disposed of with normal household waste. Please protect the environment by disposing of this product responsibly in the correct manner.

 **radfan**
www.radfan.com

For further help and advice on this product please contact your supplier.