

24 antibacterial screen wipes

Removes dirt, dust, grease, fingermarks and bacteria from LCD, TFT, coated and non coated glass and touch screens.

These antibacterial screen wipes are also safe to use on plastic housings, keypads and metal fittings and are anti-static and non smear.

Individually foil wrapped means they are ideal to carry with you on the go and are always fresh.

- Always refer to the manufacturer's cleaning instructions before use.
- Remove wipe completely from sachet and apply gently to the screen.
- Ensure any abrasive deposits are removed before proceeding.
- Do not use on damaged screens or equipment.
- Do not re-use wipes.
- Avoid contact with eyes and broken skin.
- For sensitive skin, use rubber gloves.

Keep out of reach of children.
Caution: 5-Chloro-2-methyl-4-isothiazolin-3-one [EC no. 247-500-7] and 2-Methyl-4-isothiazolin-3-one [EC no. 220-239-6] (3:1). May produce an allergic reaction.
Contains: <5% disinfectants, <5% perfumes, Contains METHYLCHLOROISOTHIAZOLINONE, METHYLSTHAZOLINONE.
Concentration of active substance: 5-chloro-2-methyl-4-isothiazolin-3-one [EC no. 247-500-7] and 2-methyl-4-isothiazolin-3-one [EC no. 220-239-6] (3:1) <0.025%, Benzalkonium Chloride 0.3%.

We'd love to hear from you.
Call us on 015394 88100,
email us at info@lakeland.co.uk
or drop us a line at
**Lakeland, Alexandra Buildings,
Windermere, Cumbria LA23 1BQ.**
Made for Lakeland in Spain.

 LAKELAND



24 antibacterial screen wipes

24 antibacterial screen wipes

24 antibacterial screen wipes

Removes dirt,
dust, grease,
fingermarks and
bacteria from LCD, TFT,
coated and non coated
glass and
touch screens.

Removes dirt,
dust, grease,
fingermarks and
bacteria from LCD, TFT,
coated and non coated
glass and
touch screens.

Removes dirt,
dust, grease,
fingermarks and
bacteria from LCD, TFT,
coated and non coated
glass and
touch screens.

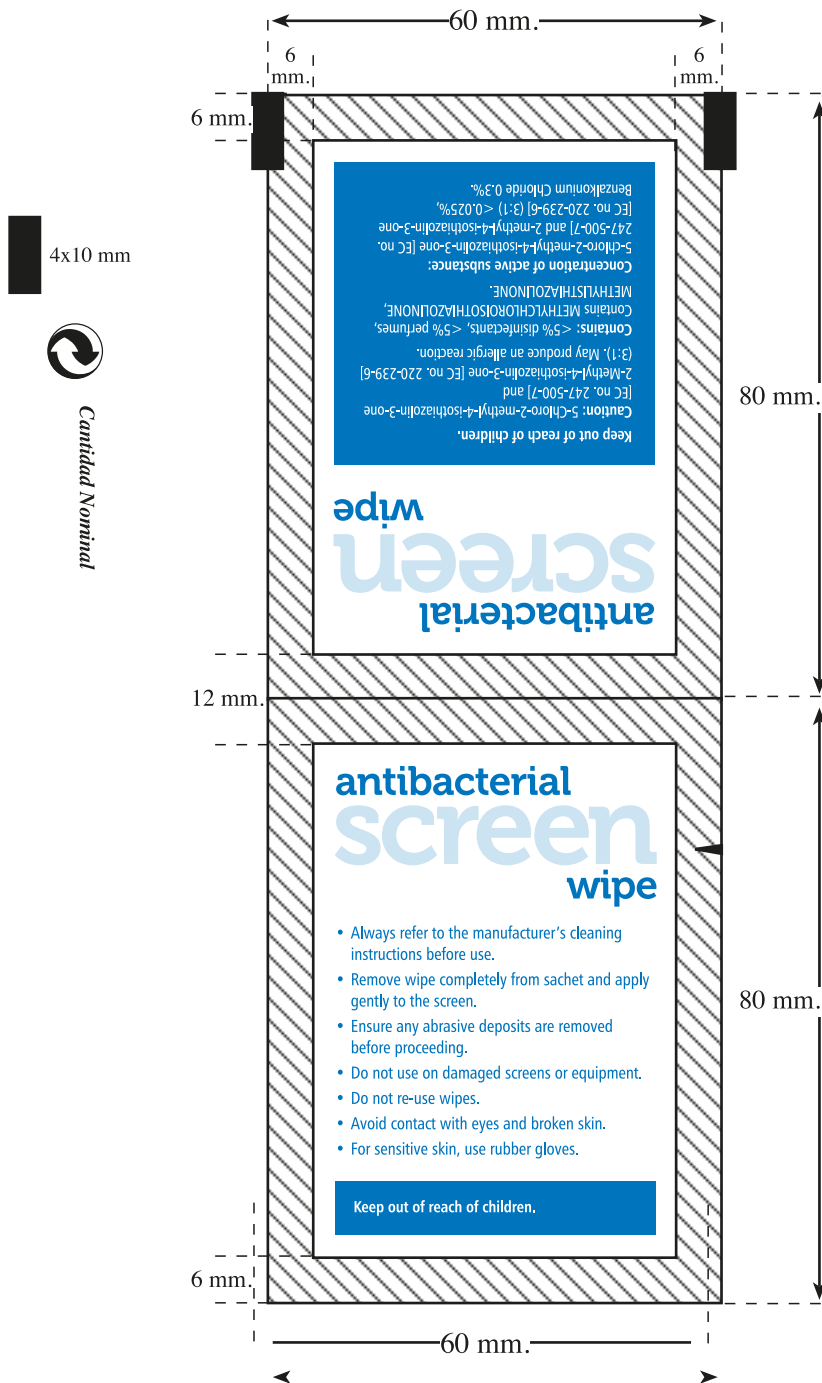
24 individually foil sealed screen wipes suitable
for all screen types and ideal for on the go.



Laboratorios
SPARCHIM

PLAN DE IMPRESION PARA SOBRE 60X80 mm Escala 1:1

PRINTING PLAN FOR THE PACKETS 60X80 mm Scale 1:1



(A)

Area máxima para la impresión de textos./Maximum area for text printing.

↑ Dirección de los textos en cada cara./Direction of text on each side.

↓ Dirección de los textos en cada cara./Direction of text on each side.



Banda de soldadura
NO IMPRIMIR TEXTOS
DO NOT PRINT
the soldering Band