

TABLE OF CONTENTS

- PERSONAL COFFEE MAKER SAFETY**
- Important safeguards 6
- Electrical requirements 8
- Electrical equipment waste disposal 8
- PARTS AND FEATURES**
- Personal Coffee Maker parts 9
- Personal Coffee Maker features 10
- USING THE PERSONAL COFFEE MAKER** 11
- TIPS FOR GREAT RESULTS** 13
- CARE AND CLEANING**
- Cleaning the Personal Coffee Maker 13
- Descaling the Personal Coffee Maker 14
- TROUBLESHOOTING** 15
- WARRANTY AND SERVICE**
- KitchenAid Personal Coffee Maker warranty 16
- Customer service 16

Your safety and the safety of others are very important.

We have provided many important safety messages in this manual and on your appliance. Always read and obey all safety messages.



This is the safety alert symbol.

This symbol alerts you to potential hazards that can kill or hurt you and others.

All safety messages will follow the safety alert symbol and either the word "DANGER" or "WARNING." These words mean:

! DANGER

You can be killed or seriously injured if you don't immediately follow instructions.

! WARNING

You can be killed or seriously injured if you don't follow instructions.

All safety messages will tell you what the potential hazard is, tell you how to reduce the chance of injury, and tell you what can happen if the instructions are not followed.

IMPORTANT SAFEGUARDS

When using electrical appliances, basic safety precautions should always be followed, including the following:

1. Read all instructions.
2. Do not touch hot surfaces. Use handles or knobs.
3. To protect against electrical shock, do not immerse cord, plugs, or coffee maker in water or other liquid.
4. This appliance can be used by children aged from 8 years and above and persons with reduced physical, sensory or mental capabilities or lack of experience and knowledge if they have been given supervision or instruction concerning use of the appliance in a safe way and understand hazards involved. Children shall not play with the appliance. Cleaning and user maintenance shall not be made by children without supervision.
5. Unplug coffee maker from outlet when not in use and before cleaning. Allow to cool before putting on or taking off parts.
6. Do not operate any appliance with a damaged cord or plug or after the appliance malfunctions or has been damaged in any manner. Return appliance to the nearest Authorized Service Center for examination, repair or electrical or mechanical adjustment.

7. The use of attachments not recommended or sold by KitchenAid may cause fire, electric shock, or injury.
8. Do not use outdoors.
9. Do not let cord hang over edge of table or counter, or touch hot surfaces.
10. Do not place on or near a hot gas or electric burner, or in a heated oven.
11. Do not use appliance for other than intended use.
12. Do not use appliance without lid properly placed on travel mug.
13. The travel mug is designed for use with this appliance. It must never be used on a range top or in a microwave oven.
14. Do not clean travel mug with abrasive cleaners, steel wool pads, or other abrasive material.
15. **This product is designed for household use only.**

SAVE THESE INSTRUCTIONS

PERSONAL COFFEE MAKER SAFETY

Electrical requirements

⚠ WARNING



Electrical Shock Hazard

- Plug into a grounded outlet.**
- Do not remove ground prong.**
- Do not use an adapter.**
- Do not use an extension cord.**

Failure to follow these instructions can result in death, fire, or electrical shock.

Voltage: 220-240 Volts

Frequency: 50/60 Hz

Wattage: 580-700 W


NOTE: If the plug does not fit in the outlet, contact a qualified electrician. Do not modify the plug in any way.

Do not use an extension cord. If the power supply cord is too short, have a qualified electrician or serviceman install an outlet near the appliance.

A short power supply cord (or detachable power supply cord) should be used to reduce the risk resulting from becoming entangled in or tripping over a longer cord.

Electrical equipment waste disposal

Disposal of packing material


The packing material is 100% recyclable and is marked with the recycle symbol . The various parts of the packing must therefore be disposed of responsibly and in full compliance with local authority regulations governing waste disposal.

Scrapping the product

- This appliance is marked in compliance with European Directive 2002/96/EC, Waste Electrical and Electronic Equipment (WEEE).

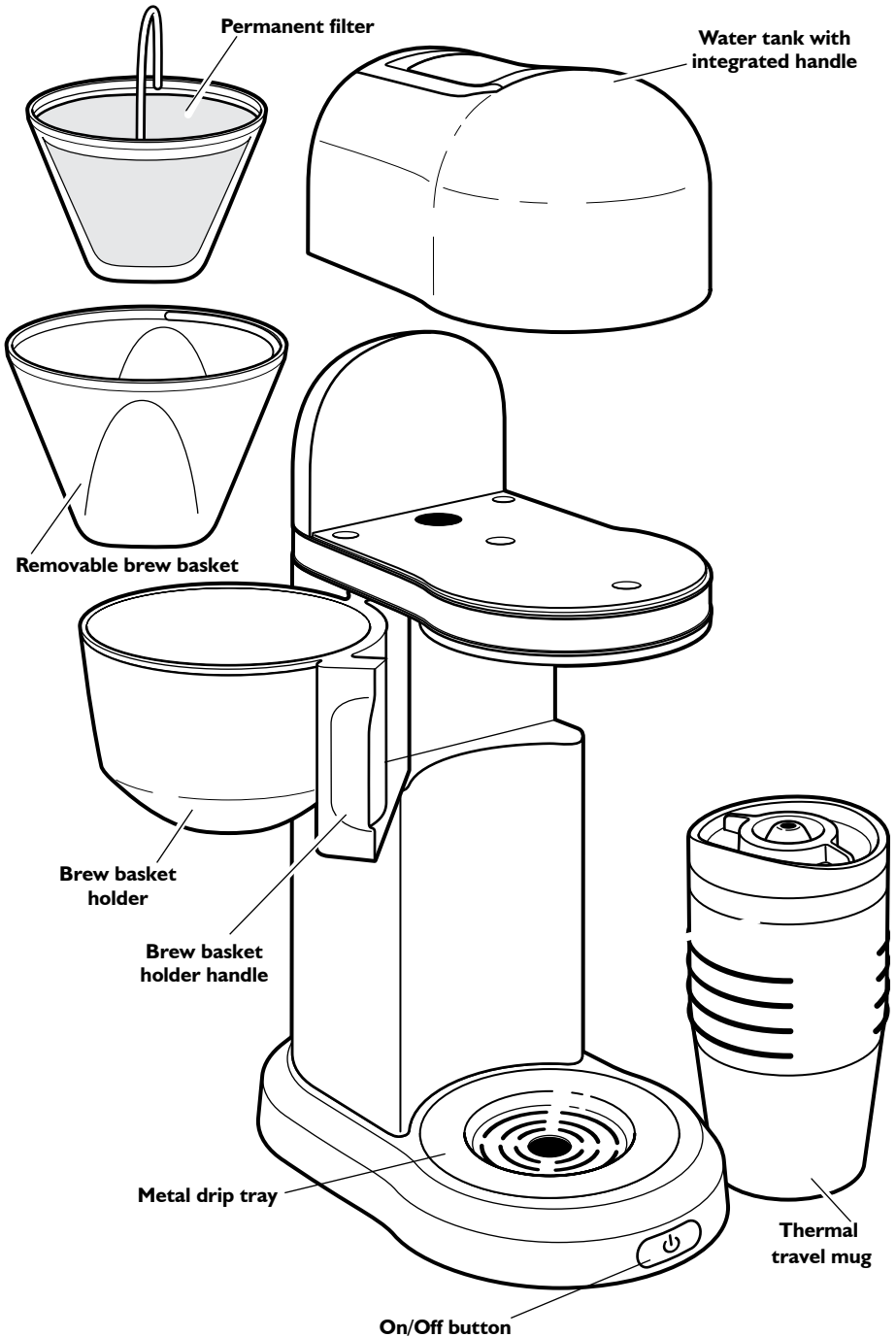
- By ensuring this product is disposed of correctly, you will help prevent potential negative consequences for the environment and human health, which could otherwise be caused by inappropriate waste handling of this product.

For more detailed information about treatment, recovery and recycling of this product, please contact your local city office, your household waste disposal service or the shop where you purchased the product.

- The symbol  on the product or on the accompanying documentation indicates that it should not be treated as domestic waste but must be taken to an appropriate collection centre for the recycling of electrical and electronic equipment.

PARTS AND FEATURES

Personal Coffee Maker parts



PARTS AND FEATURES

Personal Coffee Maker features

On/off Button

A unique signal indicates when the Personal Coffee Maker is ON, and the ON/OFF button (⏻) becomes blue. When it turns OFF, the signal beeps three times.

End-Of-Brewing Tone

A signal beeps three times when the brewing cycle is finished.

Brew Basket Holder Handle

Access the removable brew basket by pulling the handle to the left. A latch assures the brew basket holder is well closed.

Removable Brew Basket

The brew basket holds either paper coffee filters or the permanent filter. The brew basket can be washed in the top rack of a dishwasher.

Permanent Filter

The high-performance filter eliminates the need for paper coffee filters. It can be washed in the top rack of a dishwasher.

Removable Water Tank

The coffee maker features a convenient removable water tank. Remove the tank and add water directly. It is recommended that the tank be hand washed.

Thermal Travel Mug

The 540 mL thermal travel mug features a comfortable soft grip and brushed stainless steel body. Travel mug must be washed by hand with soap and hot water.

Cord Storage (not shown)

Compartment in the back of the Personal Coffee Maker keeps excess cord out of the way.

Heat Pump (not shown)

Powerful heat pump brews rich, flavorful coffee.

Electronic Temperature Control (not shown)

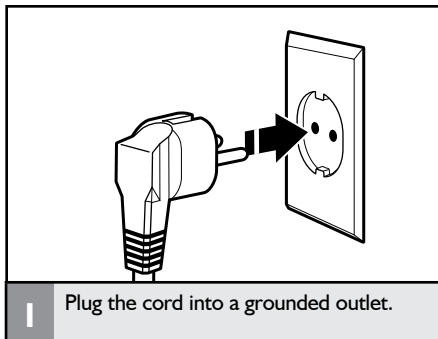
Electronic temperature control regulates the heat pump to ensure consistent brewing every time.

USING THE PERSONAL COFFEE MAKER

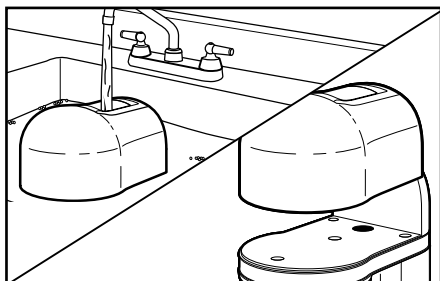
Before first use

Wash the brew basket, the permanent filter, and travel mug in hot, soapy water, then rinse with clean water and dry. Do not use abrasive cleansers or scouring pads.

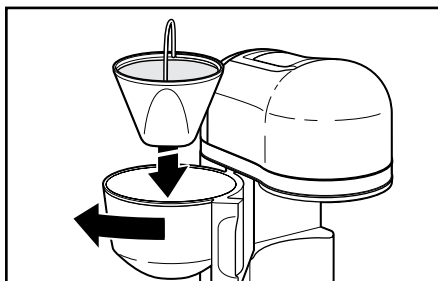
Brew one mug of fresh, cool water and discard before brewing the first mug of coffee (first time use only).



1 Plug the cord into a grounded outlet.

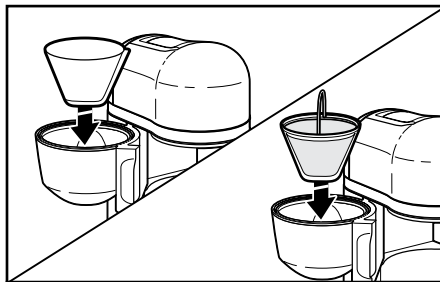


2 Remove the water tank and fill with enough fresh, cool water to make the desired amount of coffee. When replacing the tank, make sure to align it with the tabs.

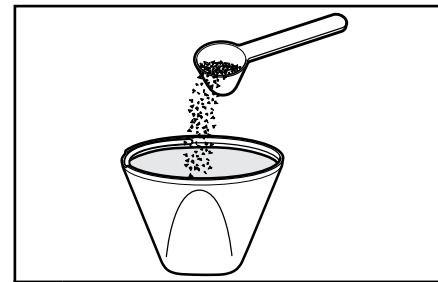


3 Open the brew basket holder. The brew basket may be either removed or filled directly from the front of the coffee maker.

NOTE: The tank can also be filled without being removed from the coffee maker.



4 Insert a cone paper filter (size 2) or the permanent filter into the brew basket.



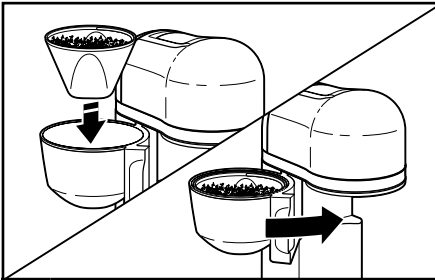
5 Fill the filter with one level tablespoon of ground coffee for each 180 mL desired. Use a medium grind appropriate for automatic filter coffee makers.

IMPORTANT: Do not use both types of filters at the same time. Using both filters might cause water and coffee to overflow the brew basket.

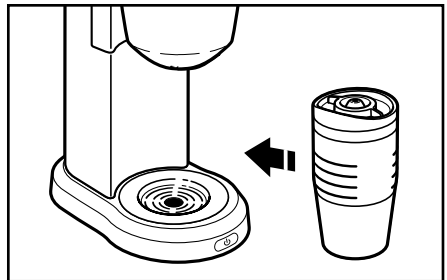
NOTE: Too fine a grind produces bitterness and may clog the coffee filter.

IMPORTANT: Always place the filter and coffee into the removable brew basket. Do not operate the Personal Coffee Maker without the brew basket in place.

USING THE PERSONAL COFFEE MAKER

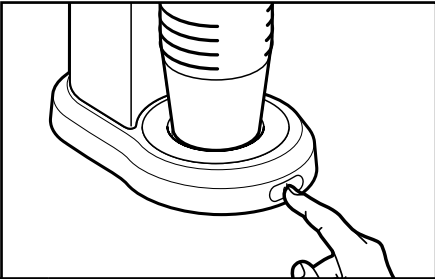



- 6** Even out the ground coffee surface. If the brew basket was removed, replace securely by centering mounting holes over the pins in the brew basket holder, and press firmly to seat in position. Be sure the brew basket holder door is fully closed before brewing.

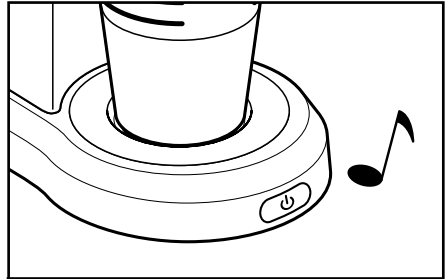


- 7** Place the thermal travel mug on the metal drip tray. To maximize coffee temperature, it is recommended to brew coffee with the lid already placed on the mug. Make sure that the lid is centered. You may also fill the mug with hot tap water for 30 seconds to preheat for hotter coffee temperatures.

NOTE: The coffee maker is capable of brewing into most tall-sided coffee mugs.



- 8** Press the  button to begin brewing coffee. The On/Off button will light up and a tone will sound.



- 9** The Personal Coffee Maker will sound an end-of-brewing tone (3 beeps) when brewing is complete.

Repeat this procedure to brew additional mugs of coffee. Always turn off the Personal Coffee Maker and allow it to cool for 5 minutes before starting the next brew cycle.

NOTE: The outside of the travel mug will be hot to the touch after brewing.

TIPS FOR GREAT RESULTS

Fresh Coffee Beans

Truly great coffee can only come from fresh coffee beans. To preserve the freshness of your beans, keep them in an opaque, air-tight container and store them in a cool, dry place. Refrigeration is not recommended, since condensation tends to form on the beans whenever the container is opened. Freezing can help preserve beans stored for an extended period, but it will also impair flavor.

The Right Grind

The best cup of coffee comes from coffee beans that are properly ground just before brewing. When grinding, be sure to grind your coffee to a medium grind level, the appropriate grind for automatic filter coffee makers.

The Proper Amount of Ground Coffee

A good starting point is one tablespoon of coffee for every 180 mL of brew water marked on the water tank. Finer grinds usually require less coffee but may also produce bitterness and clog the filter.

For weaker coffee, brew using the suggested ratio of coffee grounds and water, then dilute with hot water. This maximizes flavor and minimizes bitterness.

Brew Water Purity

Great tasting coffee starts with fresh water. The removable water tank is easy to fill with water, as well as easy to clean, so you can always make your coffee with the freshest water.

If you don't like the taste of your tap water, you may wish to use bottled water. Do not use distilled water or highly mineralized water since they can damage your Personal Coffee Maker.

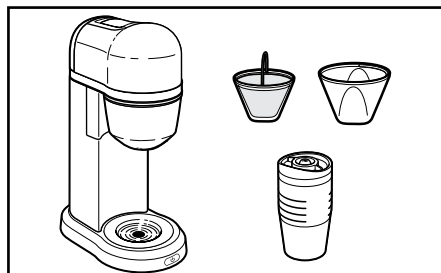
Coffee Maker Cleanliness

Since the coffee oils that build up on the brew basket and mug can go stale and impair the flavor of the brewed coffee, it's important that these two items are cleaned daily in order to make the best tasting coffee.

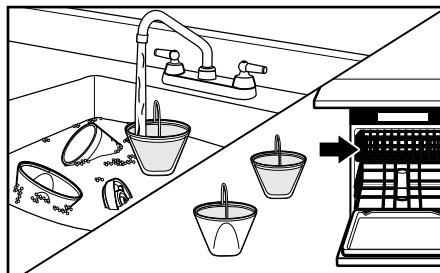
CARE AND CLEANING

Cleaning the Personal Coffee Maker

IMPORTANT: Make sure the Personal Coffee Maker is switched off, unplugged, and completely cool before cleaning.

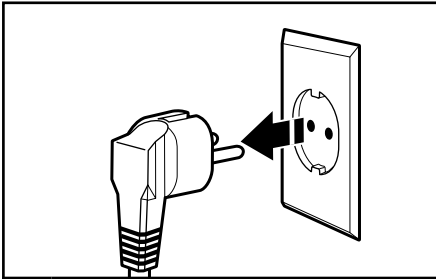


- 1 Remove brew basket, permanent filter and travel mug from the Personal Coffee Maker.

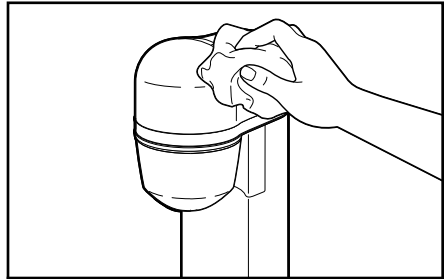


- 2 Wash the brew basket and permanent filter in hot, soapy water and rinse with hot water. Do not use abrasive cleansers or scouring pads. These parts can also be washed in the upper rack of a dishwasher. The travel mug must be washed by hand with soap and hot water.

CARE AND CLEANING



3 Unplug the Personal Coffee Maker.

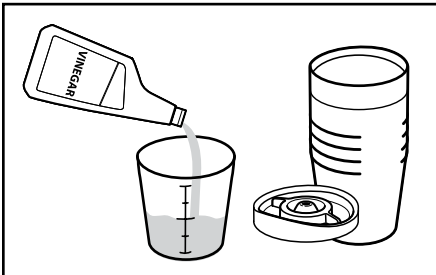


4 Wipe the housing with a warm, soapy cloth. Then wipe clean with damp cloth and dry with a soft cloth. Do not use abrasive cleansers or scouring pads.

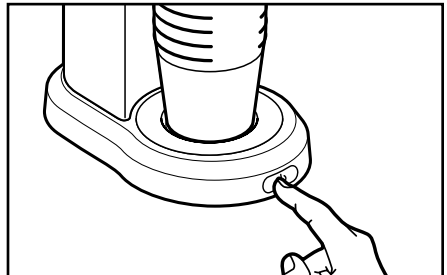
Descaling the Personal Coffee Maker


Calcium deposits (scale) from water will build up in the heat pump over time and impair brewing efficiency and coffee quality. Scale should be removed every two months; local hard-water conditions may require more frequent descalings.

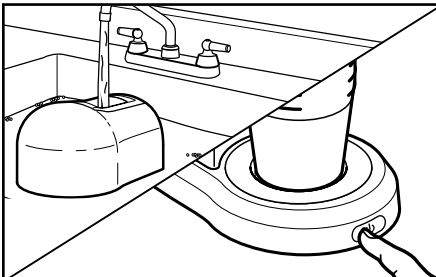
The Personal Coffee Maker can be descaled using a packaged descaling agent or vinegar. Always mix the descaling solution using cool water.



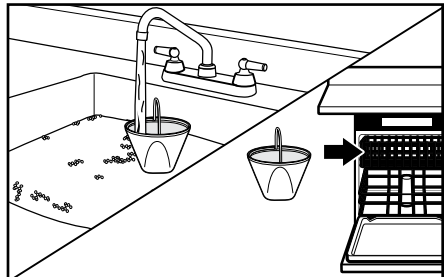
1 When using vinegar, fill the mug with a solution consisting of $\frac{1}{2}$ vinegar and $\frac{1}{2}$ water. Before descaling, always make sure the brew basket contains no coffee or coffee filters.



2 Run the Personal Coffee Maker through a complete brewing cycle using a full tank of the descaling solution or the vinegar mixture. Press the  button to start the brewing cycle.



3 Rinse by running it through 2 brewing cycles using a full water tank of fresh, cool water each time.



4 Wash the brew basket in hot, soapy water and rinse with hot water. The brew basket can also be washed in the upper rack of the dishwasher.

TROUBLESHOOTING

- **If only a portion of the water added to the Personal Coffee Maker actually brews:** The Personal Coffee Maker requires immediate descaling. Please refer to “Descaling the Personal Coffee Maker” in the “Care and Cleaning” section.
- **If the problem cannot be corrected:** See the “Warranty and Service” section.

WARRANTY AND SERVICE

KitchenAid Personal Coffee Maker warranty

Length of Warranty:	KitchenAid Will Pay For:	KitchenAid Will Not Pay For:
Europe, Middle East and Africa: Two years full warranty from date of purchase.	The replacement parts and repair labor costs to correct defects in materials or workmanship. Service must be provided by an Authorized KitchenAid Service Center.	A. Repairs when Personal Coffee Maker is used for operations other than normal household beverage preparation. B. Damage resulting from accident, alterations, misuse, abuse, or installation/operation not in accordance with local electrical codes.

KITCHENAID DOES NOT ASSUME ANY RESPONSIBILITY FOR INDIRECT DAMAGES.

Customer service

In U.K. and Ireland:

For any questions, or to find the nearest KitchenAid Authorized Service Center, please find our contact details below.

NOTE: All service should be handled locally by an Authorized KitchenAid Service Center.

Contact number for U.K. and Northern Ireland:

Tollfree number 0800 988 1266 (calls from mobile phones are charged standard network rate)

Contact number for Ireland:

Tollfree number +44 (0) 20 8616 5148

E-mail contact for U.K. and Ireland:

Go to www.kitchenaid.co.uk, and click on the link "Contact Us" at the bottom of the page.

Address for U.K. and Ireland:

KitchenAid Europa, Inc.
PO BOX 19
B-2018 ANTWERP 11
BELGIUM

In other countries:

For all product related questions and after sales matters, please contact your dealer to obtain the name of the nearest Authorized KitchenAid Service/Customer Center.

www.KitchenAid.eu

© 2013. All rights reserved.
Specifications subject to change without notice.