

 LAKELAND

USER MANUAL



The Lakeland guarantee...

is probably the simplest guarantee in the world!
If you are not satisfied at any time, you receive your money back!
This is our promise.

Lakeland

Alexandra Buildings, Windermere, Cumbria LA23 1BQ
Tel: 015394 88100 www.lakeland.co.uk

LAKELAND STAINLESS STEEL DIGITAL SCALE

Model: 14286

Helpline No: 015394 88100

INTRODUCTION

Thank you for choosing this stainless steel digital kitchen scale from Lakeland. This sleek, contemporary scale offers precision weighing with an easy-to-read LCD display that also features a handy cook's timer. Please take a few moments to read these instructions before using the scale for the first time, and keep them in a safe place for future reference.



FEATURES

1. Stainless steel bowl
2. Stainless steel weighing platform
3. LCD display
4. Z/T button - add and weigh
5. UNIT button - metric/imperial
6. ON/OFF button
7. T-SET button - timer function

Capacity: 5kg/11lb

Graduation: 1g/0.1oz

Battery type: 2 AAA batteries (not included)

TROUBLESHOOTING

If the screen says Lo – replace the battery.

If the screen says Err – the scale is overloaded. Remove the weight immediately to avoid permanent damage. The maximum capacity is 5kg/11lb.

CARE AND CLEANING

To clean the scale, wipe it with a slightly damp cloth, then buff with a soft, dry cloth. Never immerse the scale in water or any liquid, and do not use chemical/abrasive cleaners or scourers as they will damage the scale. The weighing bowl may be washed in warm, soapy water, or in the dishwasher. Rinse, then dry, and place over the weighing platform for compact storage.

CAUTION: never attempt to take the scale apart or open it up, except when replacing the battery.

BATTERY SAFETY

Ensure the batteries are inserted correctly, with the cover securely in place.

Always use two AAA batteries.

The battery should be replaced by an adult.

Never throw a used battery on the fire as it may explode.

Do not attempt to charge a non-rechargeable battery.

Do not leave a flat battery in the scale; remove and replace.

We recommend removing the battery when the scale will be out of use for a long period of time.

RECYCLING YOUR PRODUCT



Along with many other high street retailers, Lakeland has joined a scheme whereby customers can take their unwanted electrical and electronic products to recycling points set up around the country.

Visit www.recycle-more.co.uk to find your nearest recycling point.

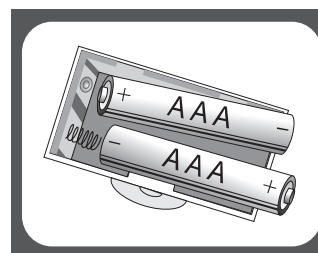
IMPORTANT SAFEGUARDS

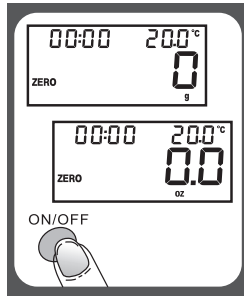
When using this digital scale, please follow these basic safety precautions.

1. Please read all instructions before using.
2. This scale is for household use only. It is not suitable for commercial or professional use. The scale must only be used for its intended purpose of weighing food.
3. Place the scale on a solid, level surface.
4. Treat the scale with care; it is a precision instrument. Do not drop it.
5. Take care not to spill water or any liquid on the scale as this may damage the electronics. Never immerse the scale in water and do not use scourers or chemical/abrasive cleaners.
6. Never attempt to take the scale apart or open it up, other than when replacing the battery. If the scale shows any signs of damage or is working incorrectly, call the helpline on **015394 88100** to arrange a repair by an authorised repairer, or a replacement. Never try to repair the scale yourself.

BEFORE USING YOUR SCALE FOR THE FIRST TIME

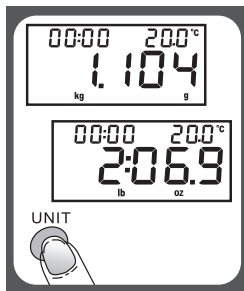
1. Carefully unpack the scale and remove any packaging. Wipe the scale with a slightly damp cloth, then dry. Wash the weighing bowl in warm, soapy water, or place in the dishwasher. Rinse, then dry.
2. Open the battery compartment on the base of the scale and insert a two AAA batteries, making sure they are properly attached to the snap-in contacts. Replace the battery compartment cover.





USING YOUR SCALE

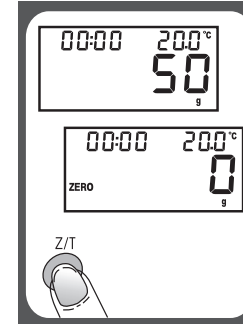
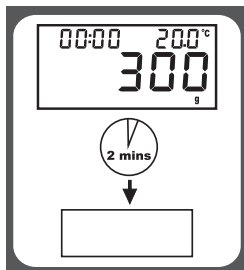
1. Begin by placing the scale on a hard, level surface to ensure accurate weighing.
2. If you are using the weighing bowl, place it on the scale, then press the ON/OFF button.
3. Wait a couple of seconds for the LCD screen to show all the information. Weight is displayed in the bottom-right corner. Current room temperature is displayed in the top-right corner (0°C to 40°C). The timer is displayed in the top-left corner – see SETTING THE TIMER.



4. To switch between metric and imperial, press the UNIT button - 'g' indicates metric, 'oz' imperial.
5. Place the food to be weighed in the bowl or directly on the scale. Its weight will appear on screen.
6. Once you have finished weighing, press the ON/OFF button.

AUTO SHUT-OFF

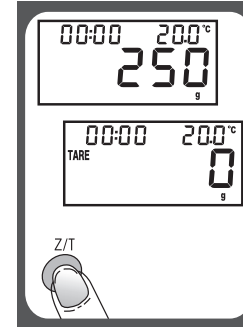
To save battery power, the scale will automatically switch off after 2 minutes if the weight display shows 0 or is unchanged.



ADDING AND WEIGHING

The scale has a helpful add-and-weigh feature so that several ingredients can be weighed in the same bowl, saving time and washing-up. The weight display can be reset to 0 after each item is weighed, simply by pressing the Z/T button.

You will see that either ZERO or TARE appears on screen. ZERO means that the total weight on the scale is 200g or less, and the maximum capacity of the scale remains at 5kg.

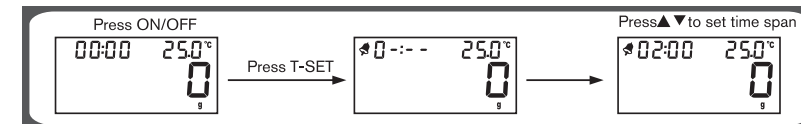


TARE means that the total weight on the scale is more than 200g, and the maximum capacity of the scale is reduced accordingly.

SETTING THE TIMER

The scale offers a handy kitchen timer with a maximum countdown of 99 mins 59 secs. To set the timer, follow these steps.

1. Switch on the scale and wait for the LCD screen to display all the information. The timer display is in the top-left corner – 00:00.
2. Press the T-SET button. The alarm symbol will appear and the timer display will appear as 0:-:-. To increase or decrease the first digit, use the upward and downward arrows on the Z/T and UNIT buttons. Press T-SET to confirm. Repeat until you have set all the digits to the time desired.



3. Press T-SET to start counting down. When the time is up, the alarm will beep loudly 60 times, then the scale will automatically turn off. To stop the alarm sooner, press the ON/OFF button.
4. To clear the timer display at any time during countdown, press the T-SET button.